

Datasheet for ABIN7296830
anti-RFC3 antibody (Center)[Go to Product page](#)

2 Images

Overview

Quantity:	100 µL
Target:	RFC3
Binding Specificity:	Center
Reactivity:	Human, Mouse, Rat, Cow, Monkey
Host:	Rabbit
Clonality:	Polyclonal
Conjugate:	This RFC3 antibody is un-conjugated
Application:	Western Blotting (WB), Immunohistochemistry (IHC)

Product Details

Immunogen:	KLH-conjugated synthetic peptide encompassing a sequence within the center region of human RFC3.
Specificity:	Recognizes endogenous levels of RFC3 protein.
Characteristics:	Rabbit polyclonal antibody to RFC3
Purification:	The antibody was purified by immunogen affinity chromatography.

Target Details

Target:	RFC3
Alternative Name:	RFC3 (RFC3 Products)
Background:	Replication factor C subunit 3, Activator 1 38 kDa subunit, A1 38 kDa subunit, Activator 1

Target Details

	subunit 3, Replication factor C 38 kDa subunit, RF-C 38 kDa subunit, RFC38
Gene ID:	5983, 69263
UniProt:	P40938 , Q8R323
Pathways:	Telomere Maintenance , DNA Damage Repair , DNA Replication , Synthesis of DNA

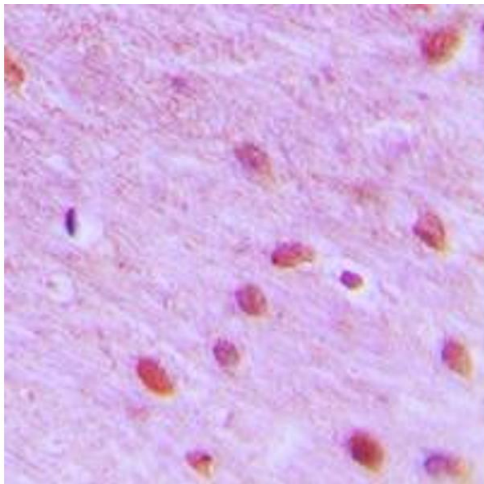
Application Details

Application Notes:	WB (1:500 - 1:1000), IH (1:100 - 1:200)
Restrictions:	For Research Use only

Handling

Format:	Liquid
Buffer:	Liquid in 0.42 % Potassium phosphate, 0.87 % Sodium chloride, pH 7.3, 30 % glycerol, and 0.01 % sodium azide.
Preservative:	Sodium azide
Precaution of Use:	This product contains Sodium azide: a POISONOUS AND HAZARDOUS SUBSTANCE which should be handled by trained staff only.
Storage:	-20 °C
Storage Comment:	Shipped at 4°C. Upon delivery aliquot and store at -20°C for one year. Avoid freeze/thaw cycles.
Expiry Date:	12 months

Images



Immunohistochemistry

Image 1. Immunohistochemical analysis of RFC3 staining in human brain formalin fixed paraffin embedded tissue section. The section was pre-treated using heat mediated antigen retrieval with sodium citrate buffer (pH 6.0). The section was then incubated with the antibody at room temperature and detected using an HRP conjugated compact polymer system. DAB was used as the chromogen. The section was then counterstained with

haematoxylin and mounted with DPX.

Western Blotting

Image 2. Western blot analysis of RFC3 expression in HeLa (A), HEK293 (B), Jurkat (C) whole cell lysates.

