

Datasheet for ABIN7296842  
**anti-ROCK1 antibody (Center)**[Go to Product page](#)

## 2 Images

## Overview

Quantity:	100 µL
Target:	ROCK1
Binding Specificity:	Center
Reactivity:	Human, Mouse, Rat, Monkey, Rabbit, Cow, Pig
Host:	Rabbit
Clonality:	Polyclonal
Conjugate:	This ROCK1 antibody is un-conjugated
Application:	Western Blotting (WB), Immunofluorescence (IF), Immunochromatography (IC)

## Product Details

Immunogen:	KLH-conjugated synthetic peptide encompassing a sequence within the center region of human ROCK1.
Specificity:	Recognizes endogenous levels of ROCK1 protein.
Characteristics:	Rabbit polyclonal antibody to ROCK1
Purification:	The antibody was purified by immunogen affinity chromatography.

## Target Details

Target:	ROCK1
Alternative Name:	ROCK1 ( <a href="#">ROCK1 Products</a> )
Background:	Rho-associated protein kinase 1, Renal carcinoma antigen NY-REN-35, Rho-associated, coiled-

### Target Details

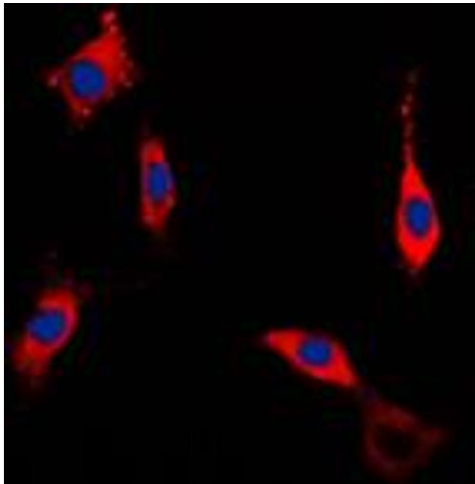
	coil-containing protein kinase 1, Rho-associated, coiled-coil-containing protein kinase I, ROCK-I, p160 ROCK-1, p160ROCK
Gene ID:	6093, 19877, 81762
UniProt:	<a href="#">Q13464</a> , <a href="#">P70335</a> , <a href="#">Q63644</a>
Pathways:	<a href="#">Microtubule Dynamics</a> , <a href="#">WNT Signaling</a> , <a href="#">M Phase</a> , <a href="#">Maintenance of Protein Location</a> , <a href="#">Signaling Events mediated by VEGFR1 and VEGFR2</a> , <a href="#">Thromboxane A2 Receptor Signaling</a>

### Application Details

Application Notes:	WB (1:500 - 1:1000), IF/IC (1:100 - 1:500)
Restrictions:	For Research Use only

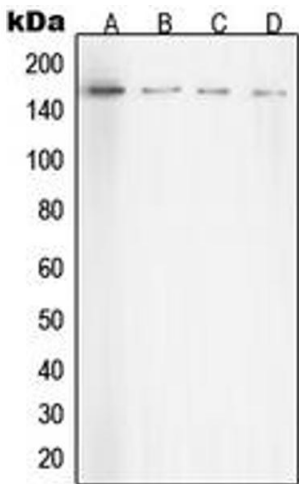
### Handling

Format:	Liquid
Buffer:	Liquid in 0.42 % Potassium phosphate, 0.87 % Sodium chloride, pH 7.3, 30 % glycerol, and 0.01 % sodium azide.
Preservative:	Sodium azide
Precaution of Use:	This product contains Sodium azide: a POISONOUS AND HAZARDOUS SUBSTANCE which should be handled by trained staff only.
Storage:	-20 °C
Storage Comment:	Shipped at 4°C. Upon delivery aliquot and store at -20°C for one year. Avoid freeze/thaw cycles.
Expiry Date:	12 months



### Immunofluorescence

**Image 1.** Immunofluorescent analysis of ROCK1 staining in NIH3T3 cells. Formalin-fixed cells were permeabilized with 0.1% Triton X-100 in TBS for 5-10 minutes and blocked with 3% BSA-PBS for 30 minutes at room temperature. Cells were probed with the primary antibody in 3% BSA-PBS and incubated overnight at 4 °C in a humidified chamber. Cells were washed with PBST and incubated with a DyLight 594-conjugated secondary antibody (red) in PBS at room temperature in the dark. DAPI was used to stain the cell nuclei (blue).



### Western Blotting

**Image 2.** Western blot analysis of ROCK1 expression in HeLa (A), NIH3T3 (B), C6 (C), COS7 (D) whole cell lysates.