

Datasheet for ABIN7296852
anti-RPL11 antibody (C-Term)[Go to Product page](#)

2 Images

1 Publication

Overview

Quantity:	100 µL
Target:	RPL11
Binding Specificity:	C-Term
Reactivity:	Human, Mouse, Rat, Cow, Pig
Host:	Rabbit
Clonality:	Polyclonal
Conjugate:	This RPL11 antibody is un-conjugated
Application:	Western Blotting (WB), Immunofluorescence (IF), Immunochromatography (IC)

Product Details

Immunogen:	KLH-conjugated synthetic peptide encompassing a sequence within the C-term region of human RPL11.
Specificity:	Recognizes endogenous levels of RPL11 protein.
Characteristics:	Rabbit polyclonal antibody to RPL11
Purification:	The antibody was purified by immunogen affinity chromatography.

Target Details

Target:	RPL11
Alternative Name:	RPL11 (RPL11 Products)
Background:	60S ribosomal protein L11, CLL-associated antigen KW-12

Target Details

Gene ID:	6135, 67025, 362631
UniProt:	P62913 , Q9CXW4 , P62914

Application Details

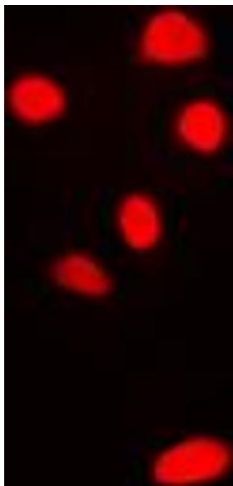
Application Notes:	WB (1:500 - 1:1000), IF/IC (1:100 - 1:500)
Restrictions:	For Research Use only

Handling

Format:	Liquid
Buffer:	Liquid in 0.42 % Potassium phosphate, 0.87 % Sodium chloride, pH 7.3, 30 % glycerol, and 0.01 % sodium azide.
Preservative:	Sodium azide
Precaution of Use:	This product contains Sodium azide: a POISONOUS AND HAZARDOUS SUBSTANCE which should be handled by trained staff only.
Storage:	-20 °C
Storage Comment:	Shipped at 4°C. Upon delivery aliquot and store at -20°C for one year. Avoid freeze/thaw cycles.
Expiry Date:	12 months

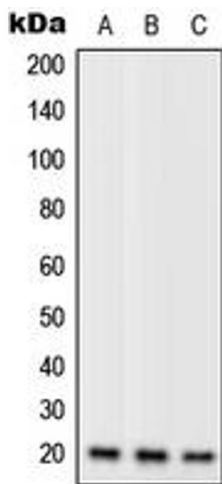
Publications

Product cited in:	Cao, Yang, Li, Xia, Han, Zhou, Wang, Yang, Li, Zhang, Cui, Ji, Lu, He, Zhou: "Genomic gain of RRS1 promotes hepatocellular carcinoma through reducing the RPL11-MDM2-p53 signaling." in: Science advances , Vol. 7, Issue 35, (2022) (PubMed).
-------------------	---



Immunofluorescence

Image 1. Immunofluorescent analysis of RPL11 staining in H9C2 cells. Formalin-fixed cells were permeabilized with 0.1% Triton X-100 in TBS for 5-10 minutes and blocked with 3% BSA-PBS for 30 minutes at room temperature. Cells were probed with the primary antibody in 3% BSA-PBS and incubated overnight at 4 °C in a humidified chamber. Cells were washed with PBST and incubated with a DyLight 594-conjugated secondary antibody (red) in PBS at room temperature in the dark. DAPI was used to stain the cell nuclei (blue).



Western Blotting

Image 2. Western blot analysis of RPL11 expression in Jurkat (A), mouse liver (B), H9C2 (C) whole cell lysates.