



Datasheet for ABIN7296854
anti-RPL17 antibody (Center)



[Go to Product page](#)

2 Images

Overview

Quantity:	100 µL
Target:	RPL17
Binding Specificity:	Center
Reactivity:	Human, Mouse, Rat, Monkey, Cow
Host:	Rabbit
Clonality:	Polyclonal
Conjugate:	This RPL17 antibody is un-conjugated
Application:	Western Blotting (WB), Immunohistochemistry (IHC), Immunoprecipitation (IP)

Product Details

Immunogen:	KLH-conjugated synthetic peptide encompassing a sequence within the center region of human RPL17.
Specificity:	Recognizes endogenous levels of RPL17 protein.
Characteristics:	Rabbit polyclonal antibody to RPL17
Purification:	The antibody was purified by immunogen affinity chromatography.

Target Details

Target:	RPL17
Alternative Name:	RPL17 (RPL17 Products)
Background:	60S ribosomal protein L17, 60S ribosomal protein L23, PD-1

Target Details

Gene ID: 100526842, 6139, 291434

UniProt: [P18621](#), [Q9CPR4](#), [P24049](#)

Application Details

Application Notes: WB (1:500 - 1:1000), IH (1:100 - 1:200), IP (1:10 - 1:100)

Restrictions: For Research Use only

Handling

Format: Liquid

Buffer: Liquid in 0.42 % Potassium phosphate, 0.87 % Sodium chloride, pH 7.3, 30 % glycerol, and 0.01 % sodium azide.

Preservative: Sodium azide

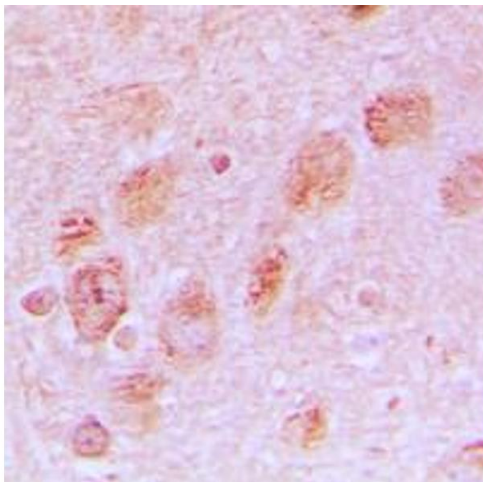
Precaution of Use: This product contains Sodium azide: a POISONOUS AND HAZARDOUS SUBSTANCE which should be handled by trained staff only.

Storage: -20 °C

Storage Comment: Shipped at 4°C. Upon delivery aliquot and store at -20°C for one year. Avoid freeze/thaw cycles.

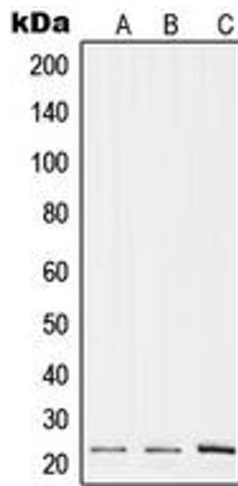
Expiry Date: 12 months

Images



Immunohistochemistry

Image 1. Immunohistochemical analysis of RPL17 staining in human brain formalin fixed paraffin embedded tissue section. The section was pre-treated using heat mediated antigen retrieval with sodium citrate buffer (pH 6.0). The section was then incubated with the antibody at room temperature and detected using an HRP conjugated compact polymer system. DAB was used as the chromogen. The section was then counterstained with haematoxylin and mounted with DPX.



Western Blotting

Image 2. Western blot analysis of RPL17 expression in A375 (A), Raw264.7 (B), H9C2 (C) whole cell lysates.