

Datasheet for ABIN7296856  
**anti-RPL30 antibody (C-Term)**[Go to Product page](#)

## 2 Images

## Overview

Quantity:	100 µL
Target:	RPL30
Binding Specificity:	C-Term
Reactivity:	Human, Mouse, Rat, Monkey, Cow, Chicken
Host:	Rabbit
Clonality:	Polyclonal
Conjugate:	This RPL30 antibody is un-conjugated
Application:	Western Blotting (WB), Immunohistochemistry (IHC), Immunoprecipitation (IP)

## Product Details

Immunogen:	KLH-conjugated synthetic peptide encompassing a sequence within the C-term region of human RPL30.
Specificity:	Recognizes endogenous levels of RPL30 protein.
Characteristics:	Rabbit polyclonal antibody to RPL30
Purification:	The antibody was purified by immunogen affinity chromatography.

## Target Details

Target:	RPL30
Alternative Name:	RPL30 ( <a href="#">RPL30 Products</a> )
Background:	60S ribosomal protein L30

## Target Details

Gene ID:	6156, 19946, 100362027
UniProt:	<a href="#">P62888</a> , <a href="#">P62889</a> , <a href="#">P62890</a>

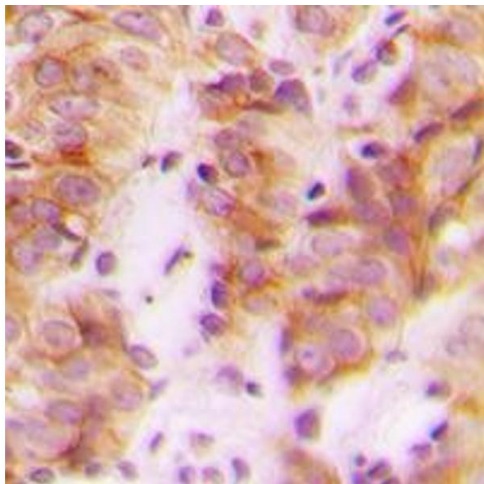
## Application Details

Application Notes:	WB (1:500 - 1:1000), IH (1:100 - 1:200), IP (1:10 - 1:100)
Restrictions:	For Research Use only

## Handling

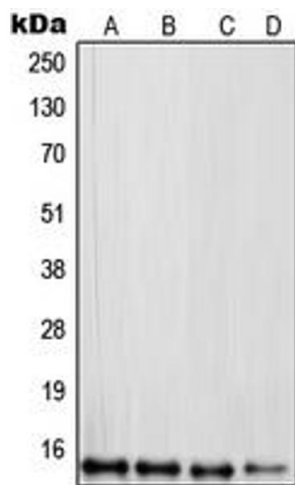
Format:	Liquid
Buffer:	Liquid in 0.42 % Potassium phosphate, 0.87 % Sodium chloride, pH 7.3, 30 % glycerol, and 0.01 % sodium azide.
Preservative:	Sodium azide
Precaution of Use:	This product contains Sodium azide: a POISONOUS AND HAZARDOUS SUBSTANCE which should be handled by trained staff only.
Storage:	-20 °C
Storage Comment:	Shipped at 4°C. Upon delivery aliquot and store at -20°C for one year. Avoid freeze/thaw cycles.
Expiry Date:	12 months

## Images



### Immunohistochemistry

**Image 1.** Immunohistochemical analysis of RPL30 staining in human breast cancer formalin fixed paraffin embedded tissue section. The section was pre-treated using heat mediated antigen retrieval with sodium citrate buffer (pH 6.0). The section was then incubated with the antibody at room temperature and detected using an HRP conjugated compact polymer system. DAB was used as the chromogen. The section was then counterstained with haematoxylin and mounted with DPX.



Western Blotting

**Image 2.** Western blot analysis of RPL30 expression in HepG2 (A), PC3 (B), RAW264.7 (C), PC12 (D) whole cell lysates.