

Datasheet for ABIN7296870
anti-RPS4X antibody (Center)

2 Images

[Go to Product page](#)

Overview

Quantity:	100 µL
Target:	RPS4X
Binding Specificity:	Center
Reactivity:	Human, Mouse, Rat, Cow, Dog, Monkey, Pig
Host:	Rabbit
Clonality:	Polyclonal
Conjugate:	This RPS4X antibody is un-conjugated
Application:	Western Blotting (WB), Immunofluorescence (IF), Immunochromatography (IC)

Product Details

Immunogen:	KLH-conjugated synthetic peptide encompassing a sequence within the center region of human RPS4X.
Specificity:	Recognizes endogenous levels of RPS4X protein.
Characteristics:	Rabbit polyclonal antibody to RPS4X
Purification:	The antibody was purified by immunogen affinity chromatography.

Target Details

Target:	RPS4X
Alternative Name:	RPS4X (RPS4X Products)
Background:	CCG2, RPS4, SCAR, 40S ribosomal protein S4, X isoform, SCR10, Single copy abundant mRNA

Target Details

	protein
Gene ID:	6191, 20102, 100362640
UniProt:	P62701 , P62702 , P62703

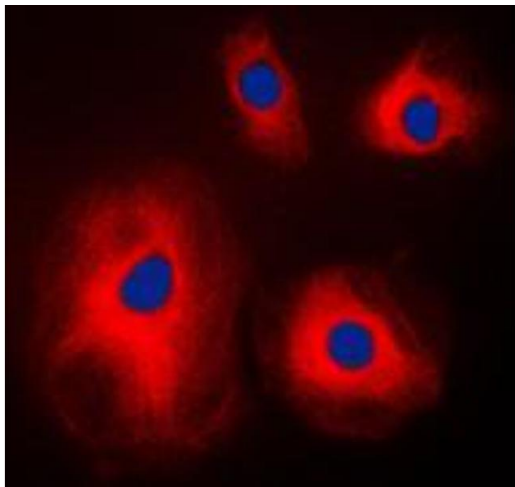
Application Details

Application Notes:	WB (1:500 - 1:1000), IF/IC (1:100 - 1:500)
Restrictions:	For Research Use only

Handling

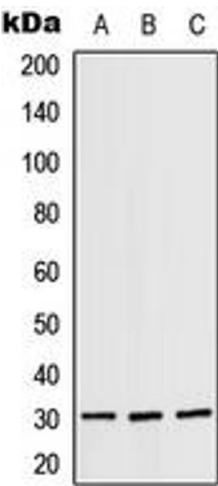
Format:	Liquid
Buffer:	Liquid in 0.42 % Potassium phosphate, 0.87 % Sodium chloride, pH 7.3, 30 % glycerol, and 0.01 % sodium azide.
Preservative:	Sodium azide
Precaution of Use:	This product contains Sodium azide: a POISONOUS AND HAZARDOUS SUBSTANCE which should be handled by trained staff only.
Storage:	-20 °C
Storage Comment:	Shipped at 4°C. Upon delivery aliquot and store at -20°C for one year. Avoid freeze/thaw cycles.
Expiry Date:	12 months

Images



Immunofluorescence

Image 1. Immunofluorescent analysis of RPS4X staining in A431 cells. Formalin-fixed cells were permeabilized with 0.1% Triton X-100 in TBS for 5-10 minutes and blocked with 3% BSA-PBS for 30 minutes at room temperature. Cells were probed with the primary antibody in 3% BSA-PBS and incubated overnight at 4 °C in a humidified chamber. Cells were washed with PBST and incubated with a DyLight 594-conjugated secondary antibody (red) in PBS at room temperature in the dark. DAPI was used to stain the cell



nuclei (blue).

Western Blotting

Image 2. Western blot analysis of RPS4X expression in A431 (A), SP2/0 (B), H9C2 (C) whole cell lysates.