

Datasheet for ABIN7296872
anti-RPS4Y1 antibody (C-Term)

2 Images

[Go to Product page](#)

Overview

Quantity:	100 µL
Target:	RPS4Y1
Binding Specificity:	C-Term
Reactivity:	Human
Host:	Rabbit
Clonality:	Polyclonal
Conjugate:	This RPS4Y1 antibody is un-conjugated
Application:	Western Blotting (WB), Immunofluorescence (IF), Immunoprecipitation (IP), Immunochromatography (IC)

Product Details

Immunogen:	KLH-conjugated synthetic peptide encompassing a sequence within the C-term region of human RPS4Y1.
Specificity:	Recognizes endogenous levels of RPS4Y1 protein.
Characteristics:	Rabbit polyclonal antibody to RPS4Y1
Purification:	The antibody was purified by immunogen affinity chromatography.

Target Details

Target:	RPS4Y1
Alternative Name:	RPS4Y1 (RPS4Y1 Products)

Target Details

Background: RPS4Y, 40S ribosomal protein S4, Y isoform 1

Gene ID: 6192

UniProt: [P22090](#)

Application Details

Application Notes: WB (1:500 - 1:1000), IF/IC (1:100 - 1:500), IP (1:10 - 1:100)

Restrictions: For Research Use only

Handling

Format: Liquid

Buffer: Liquid in 0.42 % Potassium phosphate, 0.87 % Sodium chloride, pH 7.3, 30 % glycerol, and 0.01 % sodium azide.

Preservative: Sodium azide

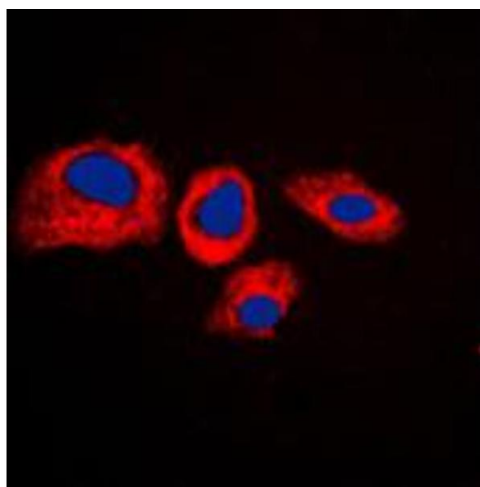
Precaution of Use: This product contains Sodium azide: a POISONOUS AND HAZARDOUS SUBSTANCE which should be handled by trained staff only.

Storage: -20 °C

Storage Comment: Shipped at 4°C. Upon delivery aliquot and store at -20°C for one year. Avoid freeze/thaw cycles.

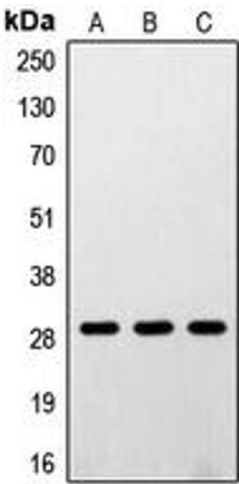
Expiry Date: 12 months

Images



Immunofluorescence

Image 1. Immunofluorescent analysis of RPS4Y1 staining in K562 cells. Formalin-fixed cells were permeabilized with 0.1% Triton X-100 in TBS for 5-10 minutes and blocked with 3% BSA-PBS for 30 minutes at room temperature. Cells were probed with the primary antibody in 3% BSA-PBS and incubated overnight at 4 °C in a humidified chamber. Cells were washed with PBST and incubated with a DyLight 594-conjugated secondary antibody (red) in PBS at room temperature in the dark. DAPI was used to stain the cell



nuclei (blue).

Western Blotting

Image 2. Western blot analysis of RPS4Y1 expression in A431 (A), K562 (B), HEK293 (C) whole cell lysates.