

Datasheet for ABIN7296902  
**anti-S100A1 antibody (N-Term)**



[Go to Product page](#)

2 Images

## Overview

Quantity:	100 µL
Target:	S100A1
Binding Specificity:	N-Term
Reactivity:	Human, Mouse, Rat, Cow, Monkey
Host:	Rabbit
Clonality:	Polyclonal
Conjugate:	This S100A1 antibody is un-conjugated
Application:	Western Blotting (WB), Immunofluorescence (IF), Immunochromatography (IC)

## Product Details

Immunogen:	KLH-conjugated synthetic peptide encompassing a sequence within the N-term region of human S100-A1.
Specificity:	Recognizes endogenous levels of S100-A1 protein.
Characteristics:	Rabbit polyclonal antibody to S100-A1
Purification:	The antibody was purified by immunogen affinity chromatography.

## Target Details

Target:	S100A1
Alternative Name:	S100-A1 ( <a href="#">S100A1 Products</a> )
Background:	S100A, Protein S100-A1, S-100 protein alpha chain, S-100 protein subunit alpha, S100 calcium-

## Target Details

	binding protein A1
Gene ID:	6271, 20193, 295214
UniProt:	<a href="#">P23297</a> , <a href="#">P56565</a> , <a href="#">P35467</a>
Pathways:	<a href="#">Regulation of Muscle Cell Differentiation</a> , <a href="#">Toll-Like Receptors Cascades</a> , <a href="#">S100 Proteins</a>

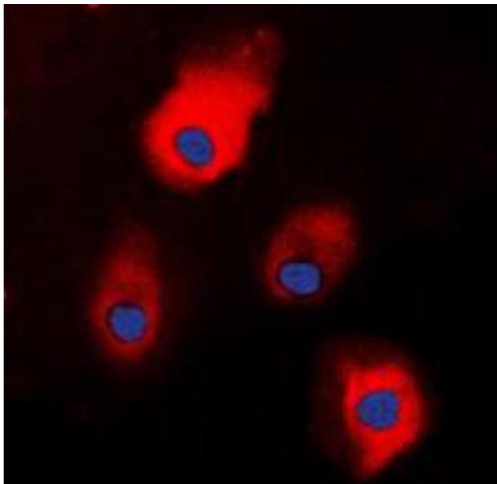
## Application Details

Application Notes:	WB (1:500 - 1:1000), IF/IC (1:100 - 1:500)
Restrictions:	For Research Use only

## Handling

Format:	Liquid
Buffer:	Liquid in 0.42 % Potassium phosphate, 0.87 % Sodium chloride, pH 7.3, 30 % glycerol, and 0.01 % sodium azide.
Preservative:	Sodium azide
Precaution of Use:	This product contains Sodium azide: a POISONOUS AND HAZARDOUS SUBSTANCE which should be handled by trained staff only.
Storage:	-20 °C
Storage Comment:	Shipped at 4°C. Upon delivery aliquot and store at -20°C for one year. Avoid freeze/thaw cycles.
Expiry Date:	12 months

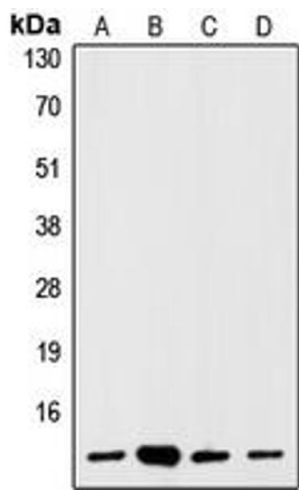
## Images



### Immunofluorescence

**Image 1.** Immunofluorescent analysis of S100-A1 staining in HEK293T cells. Formalin-fixed cells were permeabilized with 0.1% Triton X-100 in TBS for 5-10 minutes and blocked with 3% BSA-PBS for 30 minutes at room temperature. Cells were probed with the primary antibody in 3% BSA-PBS and incubated overnight at 4 °C in a humidified chamber. Cells were washed with PBST and incubated with a DyLight 594-conjugated secondary antibody (red) in PBS at room

temperature in the dark. DAPI was used to stain the cell nuclei (blue).



Western Blotting

**Image 2.** Western blot analysis of S100-A1 expression in HEK293T (A), mouse brain (B), rat brain (C), C6 (D) whole cell lysates.