

Datasheet for ABIN7296934
anti-SRSF4 antibody (Center)

2 Images

[Go to Product page](#)

Overview

Quantity:	100 µL
Target:	SRSF4
Binding Specificity:	Center
Reactivity:	Human, Mouse, Rat, Pig, Cow
Host:	Rabbit
Clonality:	Polyclonal
Conjugate:	This SRSF4 antibody is un-conjugated
Application:	Western Blotting (WB), Immunohistochemistry (IHC)

Product Details

Immunogen:	KLH-conjugated synthetic peptide encompassing a sequence within the center region of human SRSF4.
Specificity:	Recognizes endogenous levels of SRSF4 protein.
Characteristics:	Rabbit polyclonal antibody to SRSF4
Purification:	The antibody was purified by immunogen affinity chromatography.

Target Details

Target:	SRSF4
Alternative Name:	SRSF4 (SRSF4 Products)
Background:	SFRS4, SRP75, Serine/arginine-rich splicing factor 4, Pre-mRNA-splicing factor SRP75,

Target Details

	SRP001LB, Splicing factor, arginine/serine-rich 4
Gene ID:	6429
UniProt:	Q08170 , Q8VE97

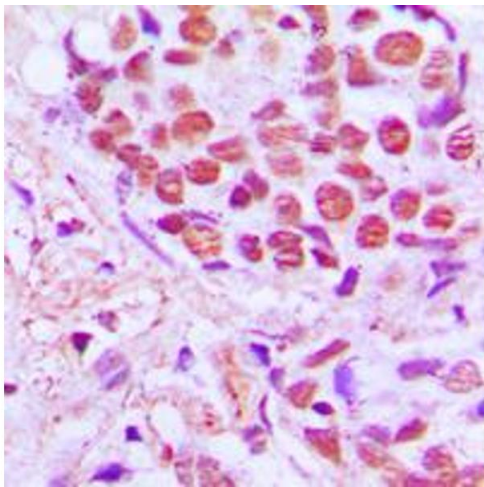
Application Details

Application Notes:	WB (1:500 - 1:1000), IH (1:100 - 1:200)
Restrictions:	For Research Use only

Handling

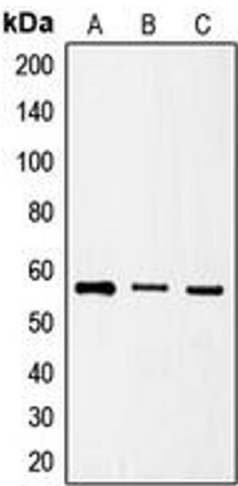
Format:	Liquid
Buffer:	Liquid in 0.42 % Potassium phosphate, 0.87 % Sodium chloride, pH 7.3, 30 % glycerol, and 0.01 % sodium azide.
Preservative:	Sodium azide
Precaution of Use:	This product contains Sodium azide: a POISONOUS AND HAZARDOUS SUBSTANCE which should be handled by trained staff only.
Storage:	-20 °C
Storage Comment:	Shipped at 4°C. Upon delivery aliquot and store at -20°C for one year. Avoid freeze/thaw cycles.
Expiry Date:	12 months

Images



Immunohistochemistry

Image 1. Immunohistochemical analysis of SRSF4 staining in human breast cancer formalin fixed paraffin embedded tissue section. The section was pre-treated using heat mediated antigen retrieval with sodium citrate buffer (pH 6.0). The section was then incubated with the antibody at room temperature and detected using an HRP conjugated compact polymer system. DAB was used as the chromogen. The section was then counterstained with haematoxylin and mounted with DPX.



Western Blotting

Image 2. Western blot analysis of SRSF4 expression in HeLa (A), HT1080 (B), NIH3T3 (C) whole cell lysates.