

Datasheet for ABIN7296952  
**anti-SIX3 antibody (Center)**



[Go to Product page](#)

1 Image

## Overview

Quantity:	100 µL
Target:	SIX3
Binding Specificity:	Center
Reactivity:	Human, Mouse, Rat, Zebrafish (Danio rerio), Chicken
Host:	Rabbit
Clonality:	Polyclonal
Conjugate:	This SIX3 antibody is un-conjugated
Application:	Western Blotting (WB)

## Product Details

Immunogen:	KLH-conjugated synthetic peptide encompassing a sequence within the center region of human SIX3.
Specificity:	Recognizes endogenous levels of SIX3 protein.
Characteristics:	Rabbit polyclonal antibody to SIX3
Purification:	The antibody was purified by immunogen affinity chromatography.

## Target Details

Target:	SIX3
Alternative Name:	SIX3 ( <a href="#">SIX3 Products</a> )
Background:	Homeobox protein SIX3, Sine oculis homeobox homolog 3

### Target Details

Gene ID:	6496, 20473
UniProt:	<a href="#">O95343</a> , <a href="#">Q62233</a>
Pathways:	<a href="#">Protein targeting to Nucleus</a>

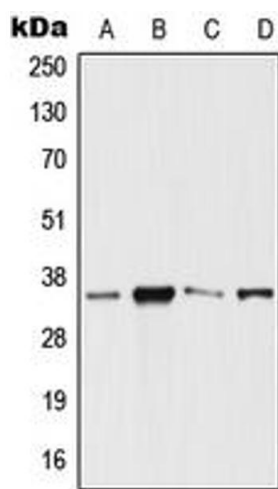
### Application Details

Application Notes:	WB (1:500 - 1:1000)
Restrictions:	For Research Use only

### Handling

Format:	Liquid
Buffer:	Liquid in 0.42 % Potassium phosphate, 0.87 % Sodium chloride, pH 7.3, 30 % glycerol, and 0.01 % sodium azide.
Preservative:	Sodium azide
Precaution of Use:	This product contains Sodium azide: a POISONOUS AND HAZARDOUS SUBSTANCE which should be handled by trained staff only.
Storage:	-20 °C
Storage Comment:	Shipped at 4°C. Upon delivery aliquot and store at -20°C for one year. Avoid freeze/thaw cycles.
Expiry Date:	12 months

### Images



#### Western Blotting

**Image 1.** Western blot analysis of SIX3 expression in HeLa (A), Jurkat (B), Raw264.7 (C), PC12 (D) whole cell lysates.