



[Go to Product page](#)

Datasheet for ABIN7296974

anti-SLC16A2/MCT8 antibody (Center)

1 Image

Overview

Quantity:	100 µL
Target:	SLC16A2/MCT8 (SLC16A2)
Binding Specificity:	Center
Reactivity:	Human, Mouse, Rat, Rabbit
Host:	Rabbit
Clonality:	Polyclonal
Conjugate:	This SLC16A2/MCT8 antibody is un-conjugated
Application:	Western Blotting (WB)

Product Details

Immunogen:	KLH-conjugated synthetic peptide encompassing a sequence within the center region of human MCT8.
Specificity:	Recognizes endogenous levels of MCT8 protein.
Characteristics:	Rabbit polyclonal antibody to MCT8
Purification:	The antibody was purified by immunogen affinity chromatography.

Target Details

Target:	SLC16A2/MCT8 (SLC16A2)
Alternative Name:	MCT8 (SLC16A2 Products)
Background:	MCT8, XPCT, Monocarboxylate transporter 8, MCT 8, Monocarboxylate transporter 7, MCT 7,

Target Details

Solute carrier family 16 member 2, X-linked PEST-containing transporter

Gene ID: 6567, 20502, 259248

UniProt: [P36021](#), [O70324](#), [Q8K1P8](#)

Pathways: [Hormone Transport](#)

Application Details

Application Notes: WB (1:500 - 1:1000)

Restrictions: For Research Use only

Handling

Format: Liquid

Buffer: Liquid in 0.42 % Potassium phosphate, 0.87 % Sodium chloride, pH 7.3, 30 % glycerol, and 0.01 % sodium azide.

Preservative: Sodium azide

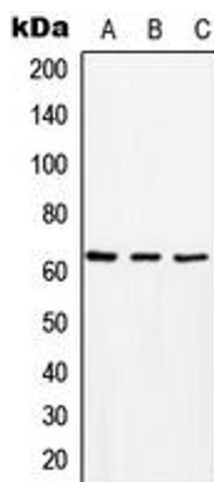
Precaution of Use: This product contains Sodium azide: a POISONOUS AND HAZARDOUS SUBSTANCE which should be handled by trained staff only.

Storage: -20 °C

Storage Comment: Shipped at 4°C. Upon delivery aliquot and store at -20°C for one year. Avoid freeze/thaw cycles.

Expiry Date: 12 months

Images



Western Blotting

Image 1. Western blot analysis of MCT8 expression in HeLa (A), Raw264.7 (B), rat kidney (C) whole cell lysates.