

Datasheet for ABIN7296982
anti-SMARCA2 antibody (Center)



[Go to Product page](#)

1 Image

Overview

Quantity:	100 µL
Target:	SMARCA2
Binding Specificity:	Center
Reactivity:	Human, Mouse, Rat, Cow, Monkey
Host:	Rabbit
Clonality:	Polyclonal
Conjugate:	This SMARCA2 antibody is un-conjugated
Application:	Western Blotting (WB)

Product Details

Immunogen:	KLH-conjugated synthetic peptide encompassing a sequence within the center region of human BRM.
Specificity:	Recognizes endogenous levels of BRM protein.
Characteristics:	Rabbit polyclonal antibody to BRM
Purification:	The antibody was purified by immunogen affinity chromatography.

Target Details

Target:	SMARCA2
Alternative Name:	BRM (SMARCA2 Products)
Background:	BAF190B, BRM, SNF2A, SNF2L2, Probable global transcription activator SNF2L2, ATP-

Target Details

dependent helicase SMARCA2, BRG1-associated factor 190B, BAF190B, Protein brahma homolog, hBRM, SNF2-alpha, SWI/SNF-related matrix-associated actin-dependent regulator of chromatin subfamily A member 2

Gene ID: 6595, 67155

UniProt: [P51531](#), [Q6DICO](#)

Application Details

Application Notes: WB (1:500 - 1:1000)

Restrictions: For Research Use only

Handling

Format: Liquid

Buffer: Liquid in 0.42 % Potassium phosphate, 0.87 % Sodium chloride, pH 7.3, 30 % glycerol, and 0.01 % sodium azide.

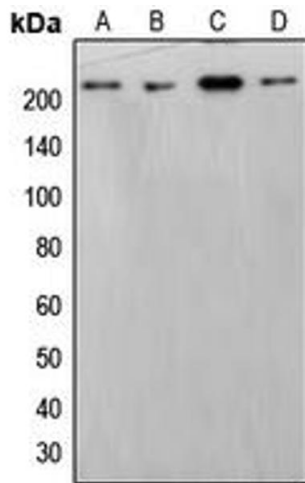
Preservative: Sodium azide

Precaution of Use: This product contains Sodium azide: a POISONOUS AND HAZARDOUS SUBSTANCE which should be handled by trained staff only.

Storage: -20 °C

Storage Comment: Shipped at 4°C. Upon delivery aliquot and store at -20°C for one year. Avoid freeze/thaw cycles.

Expiry Date: 12 months



Western Blotting

Image 1. Western blot analysis of BRM expression in HepG2 (A), HeLa (B), THP1 (C), NIH3T3 (D) whole cell lysates.