

Datasheet for ABIN7296990  
**anti-SNAP25 antibody (C-Term)**



[Go to Product page](#)

2 Images

## Overview

Quantity:	100 µL
Target:	SNAP25
Binding Specificity:	C-Term
Reactivity:	Human, Rat, Mouse, Pig, Dog, Chicken, Cow, Zebrafish (Danio rerio), Monkey
Host:	Rabbit
Clonality:	Polyclonal
Conjugate:	This SNAP25 antibody is un-conjugated
Application:	Western Blotting (WB), Immunohistochemistry (IHC)

## Product Details

Immunogen:	KLH-conjugated synthetic peptide encompassing a sequence within the C-term region of human SNAP25.
Specificity:	Recognizes endogenous levels of SNAP25 protein.
Characteristics:	Rabbit polyclonal antibody to SNAP25
Purification:	The antibody was purified by immunogen affinity chromatography.

## Target Details

Target:	SNAP25
Alternative Name:	SNAP25 ( <a href="#">SNAP25 Products</a> )
Background:	SNAP, Synaptosomal-associated protein 25, SNAP-25, Super protein, SUP, Synaptosomal-

### Target Details

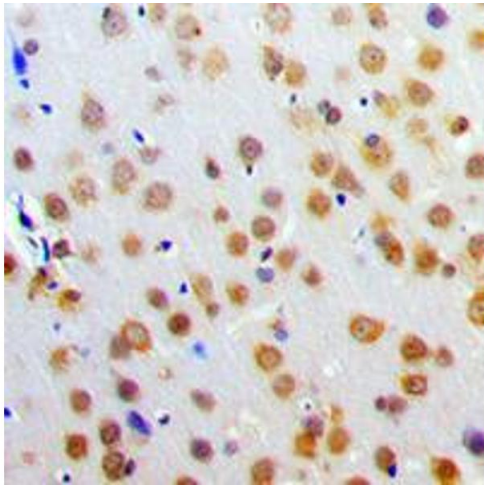
	associated 25 kDa protein
Gene ID:	6616, 20614, 25012
UniProt:	<a href="#">P60880</a> , <a href="#">P60879</a> , <a href="#">P60881</a>
Pathways:	<a href="#">Positive Regulation of Peptide Hormone Secretion</a> , <a href="#">Hormone Transport</a> , <a href="#">Synaptic Vesicle Exocytosis</a> , <a href="#">Dicarboxylic Acid Transport</a>

### Application Details

Application Notes:	WB (1:500 - 1:1000), IH (1:100 - 1:200)
Restrictions:	For Research Use only

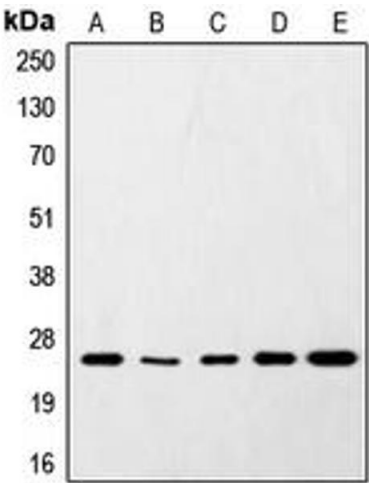
### Handling

Format:	Liquid
Buffer:	Liquid in 0.42 % Potassium phosphate, 0.87 % Sodium chloride, pH 7.3, 30 % glycerol, and 0.01 % sodium azide.
Preservative:	Sodium azide
Precaution of Use:	This product contains Sodium azide: a POISONOUS AND HAZARDOUS SUBSTANCE which should be handled by trained staff only.
Storage:	-20 °C
Storage Comment:	Shipped at 4°C. Upon delivery aliquot and store at -20°C for one year. Avoid freeze/thaw cycles.
Expiry Date:	12 months



Immunohistochemistry

**Image 1.** Immunohistochemical analysis of SNAP25 staining in human brain formalin fixed paraffin embedded tissue section. The section was pre-treated using heat mediated antigen retrieval with sodium citrate buffer (pH 6.0). The section was then incubated with the antibody at room temperature and detected using an HRP conjugated compact polymer system. DAB was used as the chromogen. The section was then counterstained with haematoxylin and mounted with DPX.



Western Blotting

**Image 2.** Western blot analysis of SNAP25 expression in HeLa (A), SKNSH (B), RAW264.7 (C), PC12 (D), rat brain (E) whole cell lysates.