



[Go to Product page](#)

Datasheet for ABIN7296992

anti-beta Synuclein antibody (C-Term)

2 Images

Overview

Quantity:	100 µL
Target:	beta Synuclein (SNCB)
Binding Specificity:	C-Term
Reactivity:	Human, Monkey
Host:	Rabbit
Clonality:	Polyclonal
Conjugate:	This beta Synuclein antibody is un-conjugated
Application:	Western Blotting (WB), Immunofluorescence (IF), Immunochromatography (IC)

Product Details

Immunogen:	KLH-conjugated synthetic peptide encompassing a sequence within the C-term region of human Beta-synuclein.
Specificity:	Recognizes endogenous levels of Beta-synuclein protein.
Characteristics:	Rabbit polyclonal antibody to Beta-synuclein
Purification:	The antibody was purified by immunogen affinity chromatography.

Target Details

Target:	beta Synuclein (SNCB)
Alternative Name:	beta-Synuclein (SNCB Products)
Background:	Beta-synuclein

Target Details

Gene ID: 6620

UniProt: [Q16143](#)

Application Details

Application Notes: WB (1:500 - 1:1000), IF/IC (1:100 - 1:500)

Restrictions: For Research Use only

Handling

Format: Liquid

Buffer: Liquid in 0.42 % Potassium phosphate, 0.87 % Sodium chloride, pH 7.3, 30 % glycerol, and 0.01 % sodium azide.

Preservative: Sodium azide

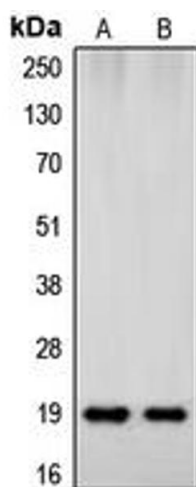
Precaution of Use: This product contains Sodium azide: a POISONOUS AND HAZARDOUS SUBSTANCE which should be handled by trained staff only.

Storage: -20 °C

Storage Comment: Shipped at 4°C. Upon delivery aliquot and store at -20°C for one year. Avoid freeze/thaw cycles.

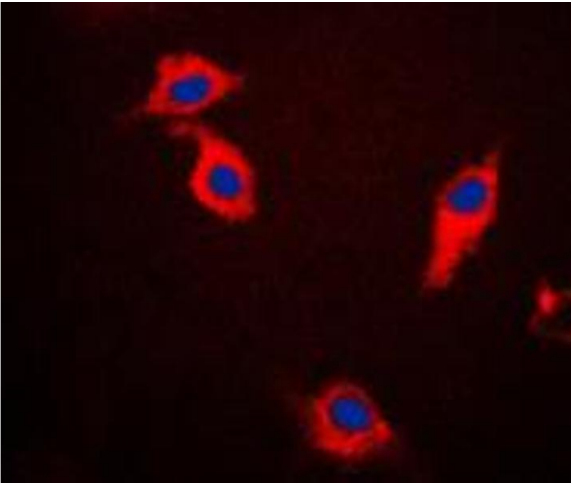
Expiry Date: 12 months

Images



Western Blotting

Image 1. Western blot analysis of Beta-synuclein expression in HeLa (A), human brain (B) whole cell lysates.



Immunofluorescence

Image 2. Immunofluorescent analysis of Beta-synuclein staining in HeLa cells. Formalin-fixed cells were permeabilized with 0.1% Triton X-100 in TBS for 5-10 minutes and blocked with 3% BSA-PBS for 30 minutes at room temperature. Cells were probed with the primary antibody in 3% BSA-PBS and incubated overnight at 4 °C in a humidified chamber. Cells were washed with PBST and incubated with a DyLight 594-conjugated secondary antibody (red) in PBS at room temperature in the dark. DAPI was used to stain the cell nuclei (blue).