



[Go to Product page](#)

Datasheet for ABIN7297068
anti-XCL2 antibody (Center)

1 Image

Overview

Quantity:	100 µL
Target:	XCL2
Binding Specificity:	Center
Reactivity:	Human, Mouse, Rat
Host:	Rabbit
Clonality:	Polyclonal
Conjugate:	This XCL2 antibody is un-conjugated
Application:	Western Blotting (WB)

Product Details

Immunogen:	KLH-conjugated synthetic peptide encompassing a sequence within the center region of human XCL2.
Specificity:	Recognizes endogenous levels of XCL2 protein.
Characteristics:	Rabbit polyclonal antibody to XCL2
Purification:	The antibody was purified by immunogen affinity chromatography.

Target Details

Target:	XCL2
Alternative Name:	XCL2 (XCL2 Products)
Background:	XCL2, SCYC2, Cytokine SCM-1 beta, C motif chemokine 2, XC chemokine ligand 2, XCL1, LTN,

Target Details

SCYC1, Lymphotactin, ATAC, C motif chemokine 1, Cytokine SCM-1, Lymphotaxin, SCM-1-alpha, Small-inducible cytokine C1, XC chemokine ligand 1

Gene ID: 6846, 6375

UniProt: [Q9UBD3](#), [P47992](#)

Application Details

Application Notes: WB (1:500 - 1:1000)

Restrictions: For Research Use only

Handling

Format: Liquid

Buffer: Liquid in 0.42 % Potassium phosphate, 0.87 % Sodium chloride, pH 7.3, 30 % glycerol, and 0.01 % sodium azide.

Preservative: Sodium azide

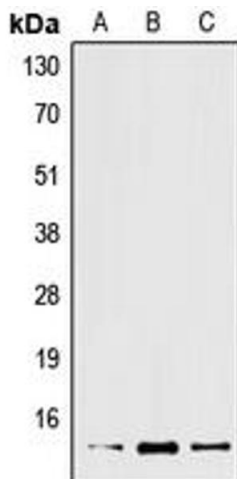
Precaution of Use: This product contains Sodium azide: a POISONOUS AND HAZARDOUS SUBSTANCE which should be handled by trained staff only.

Storage: -20 °C

Storage Comment: Shipped at 4°C. Upon delivery aliquot and store at -20°C for one year. Avoid freeze/thaw cycles.

Expiry Date: 12 months

Images



Western Blotting

Image 1. Western blot analysis of XCL2 expression in Jurkat (A), mouse liver (B), rat liver (C) whole cell lysates.