

Datasheet for ABIN7297080

anti-Synaptophysin antibody (Center)

2 Images



[Go to Product page](#)

Overview

Quantity:	100 µL
Target:	Synaptophysin (SYP)
Binding Specificity:	Center
Reactivity:	Human, Mouse, Rat, Cow, Monkey, Pig
Host:	Rabbit
Clonality:	Polyclonal
Conjugate:	This Synaptophysin antibody is un-conjugated
Application:	Western Blotting (WB), Immunofluorescence (IF), Immunochromatography (IC)

Product Details

Immunogen:	KLH-conjugated synthetic peptide encompassing a sequence within the center region of human Synaptophysin.
Specificity:	Recognizes endogenous levels of Synaptophysin protein.
Characteristics:	Rabbit polyclonal antibody to Synaptophysin
Purification:	The antibody was purified by immunogen affinity chromatography.

Target Details

Target:	Synaptophysin (SYP)
Alternative Name:	Synaptophysin (SYP Products)
Background:	Synaptophysin, Major synaptic vesicle protein p38

Target Details

Gene ID:	6855, 20977, 24804
UniProt:	P08247 , Q62277 , P07825
Pathways:	Regulation of G-Protein Coupled Receptor Protein Signaling , Regulation of long-term Neuronal Synaptic Plasticity

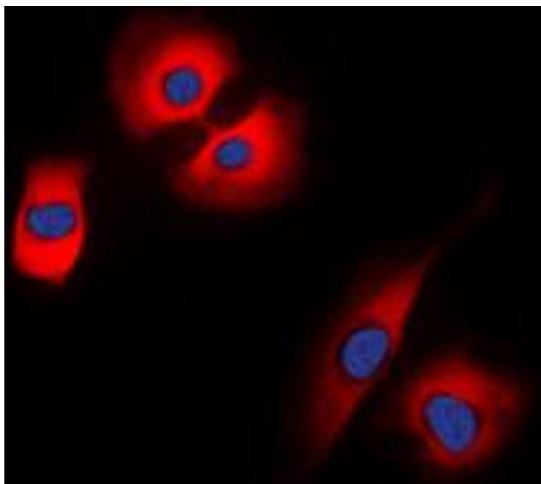
Application Details

Application Notes:	WB (1:500 - 1:1000), IF/IC (1:100 - 1:500)
Restrictions:	For Research Use only

Handling

Format:	Liquid
Buffer:	Liquid in 0.42 % Potassium phosphate, 0.87 % Sodium chloride, pH 7.3, 30 % glycerol, and 0.01 % sodium azide.
Preservative:	Sodium azide
Precaution of Use:	This product contains Sodium azide: a POISONOUS AND HAZARDOUS SUBSTANCE which should be handled by trained staff only.
Storage:	-20 °C
Storage Comment:	Shipped at 4°C. Upon delivery aliquot and store at -20°C for one year. Avoid freeze/thaw cycles.
Expiry Date:	12 months

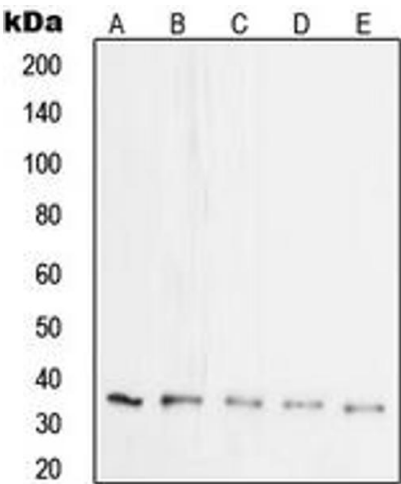
Images



Immunofluorescence

Image 1. Immunofluorescent analysis of Synaptophysin staining in HeLa cells. Formalin-fixed cells were permeabilized with 0.1% Triton X-100 in TBS for 5-10 minutes and blocked with 3% BSA-PBS for 30 minutes at room temperature. Cells were probed with the primary antibody in 3% BSA-PBS and incubated overnight at 4 °C in a humidified chamber. Cells were washed with PBST and incubated with a DyLight 594-conjugated secondary

antibody (red) in PBS at room temperature in the dark. DAPI was used to stain the cell nuclei (blue).



Western Blotting

Image 2. Western blot analysis of Synaptophysin expression in HeLa (A), SP2/0 (B), mouse brain (C), rat brain (D), PC12 (E) whole cell lysates.