

Datasheet for ABIN7297084
anti-TADA2L antibody (Center)

2 Images

[Go to Product page](#)

Overview

Quantity:	100 µL
Target:	TADA2L (TADA2A)
Binding Specificity:	Center
Reactivity:	Human, Mouse, Rat, Monkey, Cow, Dog, Rabbit, Pig
Host:	Rabbit
Clonality:	Polyclonal
Conjugate:	This TADA2L antibody is un-conjugated
Application:	Western Blotting (WB), Immunofluorescence (IF), Immunochromatography (IC)

Product Details

Immunogen:	KLH-conjugated synthetic peptide encompassing a sequence within the center region of human ADA2A.
Specificity:	Recognizes endogenous levels of ADA2A protein.
Characteristics:	Rabbit polyclonal antibody to ADA2A
Purification:	The antibody was purified by immunogen affinity chromatography.

Target Details

Target:	TADA2L (TADA2A)
Alternative Name:	ADA2A (TADA2A Products)
Background:	TADA2L, Transcriptional adapter 2-alpha, Transcriptional adapter 2-like, ADA2-like protein

Target Details

Gene ID:	6871, 217031, 360581
UniProt:	O75478 , Q8CHV6 , Q6AYE3
Pathways:	Chromatin Binding

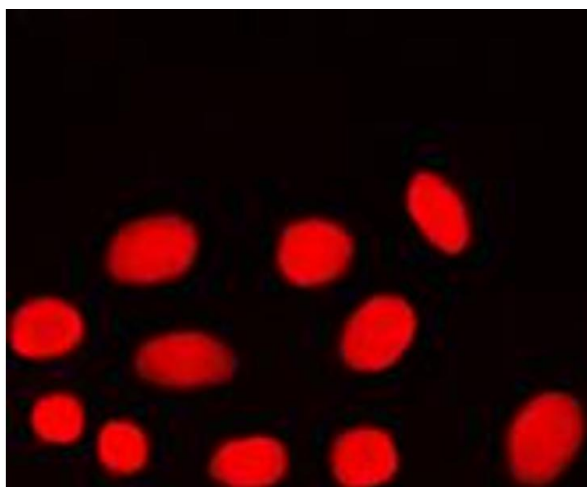
Application Details

Application Notes:	WB (1:500 - 1:1000), IF/IC (1:100 - 1:500)
Restrictions:	For Research Use only

Handling

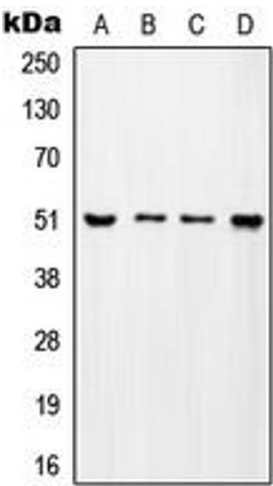
Format:	Liquid
Buffer:	Liquid in 0.42 % Potassium phosphate, 0.87 % Sodium chloride, pH 7.3, 30 % glycerol, and 0.01 % sodium azide.
Preservative:	Sodium azide
Precaution of Use:	This product contains Sodium azide: a POISONOUS AND HAZARDOUS SUBSTANCE which should be handled by trained staff only.
Storage:	-20 °C
Storage Comment:	Shipped at 4°C. Upon delivery aliquot and store at -20°C for one year. Avoid freeze/thaw cycles.
Expiry Date:	12 months

Images



Immunofluorescence

Image 1. Immunofluorescent analysis of ADA2A staining in MCF7 cells. Formalin-fixed cells were permeabilized with 0.1% Triton X-100 in TBS for 5-10 minutes and blocked with 3% BSA-PBS for 30 minutes at room temperature. Cells were probed with the primary antibody in 3% BSA-PBS and incubated overnight at 4 °C in a humidified chamber. Cells were washed with PBST and incubated with a DyLight 594-conjugated secondary antibody (red) in PBS at room temperature in the dark. DAPI was used to stain the cell



nuclei (blue).

Western Blotting

Image 2. Western blot analysis of ADA2A expression in MCF7 (A), SP2/0 (B), H9C2 (C), mouse testis (D) whole cell lysates.