

Datasheet for ABIN7297090
anti-TCF3 antibody (C-Term)

2 Images

[Go to Product page](#)

Overview

Quantity:	100 µL
Target:	TCF3
Binding Specificity:	C-Term
Reactivity:	Human, Chicken
Host:	Rabbit
Clonality:	Polyclonal
Conjugate:	This TCF3 antibody is un-conjugated
Application:	Western Blotting (WB), Immunohistochemistry (IHC)

Product Details

Immunogen:	KLH-conjugated synthetic peptide encompassing a sequence within the C-term region of human TCF3.
Specificity:	Recognizes endogenous levels of TCF3 protein.
Characteristics:	Rabbit polyclonal antibody to TCF3
Purification:	The antibody was purified by immunogen affinity chromatography.

Target Details

Target:	TCF3
Alternative Name:	TCF3 (TCF3 Products)
Background:	BHLHB21, E2A, ITF1, Transcription factor E2-alpha, Class B basic helix-loop-helix protein 21,

Target Details

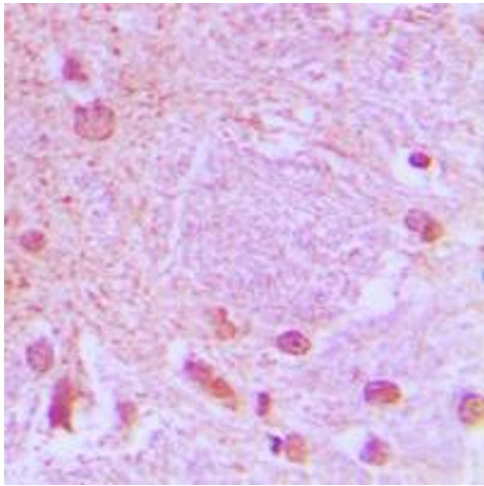
	bHLHb21, Immunoglobulin enhancer-binding factor E12/E47, Immunoglobulin transcription factor 1, Kappa-E2-binding factor, Transcription factor 3, TCF-3, Transcription factor ITF-1
Gene ID:	6929
UniProt:	P15923
Pathways:	WNT Signaling , Stem Cell Maintenance , Regulation of Muscle Cell Differentiation , Production of Molecular Mediator of Immune Response

Application Details

Application Notes:	WB (1:500 - 1:1000), IH (1:100 - 1:200)
Restrictions:	For Research Use only

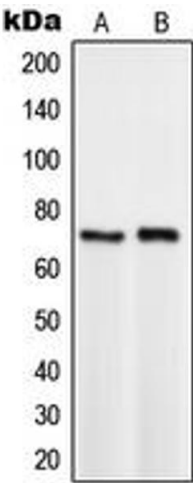
Handling

Format:	Liquid
Buffer:	Liquid in 0.42 % Potassium phosphate, 0.87 % Sodium chloride, pH 7.3, 30 % glycerol, and 0.01 % sodium azide.
Preservative:	Sodium azide
Precaution of Use:	This product contains Sodium azide: a POISONOUS AND HAZARDOUS SUBSTANCE which should be handled by trained staff only.
Storage:	-20 °C
Storage Comment:	Shipped at 4°C. Upon delivery aliquot and store at -20°C for one year. Avoid freeze/thaw cycles.
Expiry Date:	12 months



Immunohistochemistry

Image 1. Immunohistochemical analysis of TCF3 staining in human brain formalin fixed paraffin embedded tissue section. The section was pre-treated using heat mediated antigen retrieval with sodium citrate buffer (pH 6.0). The section was then incubated with the antibody at room temperature and detected using an HRP conjugated compact polymer system. DAB was used as the chromogen. The section was then counterstained with haematoxylin and mounted with DPX.



Western Blotting

Image 2. Western blot analysis of TCF3 expression in HeLa (A), BYDP (B) whole cell lysates.