

Datasheet for ABIN7297100
anti-TEAD1 antibody (Center)

2 Images

[Go to Product page](#)

Overview

Quantity:	100 µL
Target:	TEAD1
Binding Specificity:	Center
Reactivity:	Human, Mouse, Rat, Dog, Cow, Pig, Chicken
Host:	Rabbit
Clonality:	Polyclonal
Conjugate:	This TEAD1 antibody is un-conjugated
Application:	Western Blotting (WB), Immunofluorescence (IF), Immunochromatography (IC)

Product Details

Immunogen:	KLH-conjugated synthetic peptide encompassing a sequence within the center region of human TEAD1.
Specificity:	Recognizes endogenous levels of TEAD1 protein.
Characteristics:	Rabbit polyclonal antibody to TEAD1
Purification:	The antibody was purified by immunogen affinity chromatography.

Target Details

Target:	TEAD1
Alternative Name:	TEAD1 (TEAD1 Products)
Background:	TCF13, TEF1, Transcriptional enhancer factor TEF-1, NTEF-1, Protein GT-IIC, TEA domain family

Target Details

	member 1, TEAD-1, Transcription factor 13, TCF-13
Gene ID:	7003, 21676
UniProt:	P28347 , P30051
Pathways:	Regulation of Lipid Metabolism by PPARalpha

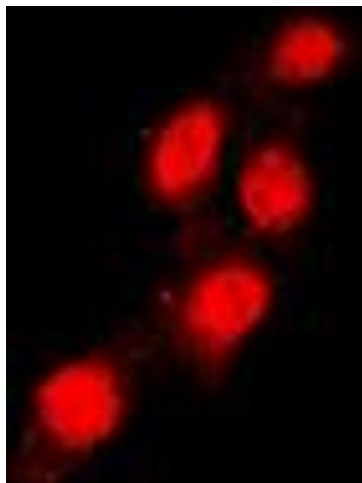
Application Details

Application Notes:	WB (1:500 - 1:1000), IF/IC (1:100 - 1:500)
Restrictions:	For Research Use only

Handling

Format:	Liquid
Buffer:	Liquid in 0.42 % Potassium phosphate, 0.87 % Sodium chloride, pH 7.3, 30 % glycerol, and 0.01 % sodium azide.
Preservative:	Sodium azide
Precaution of Use:	This product contains Sodium azide: a POISONOUS AND HAZARDOUS SUBSTANCE which should be handled by trained staff only.
Storage:	-20 °C
Storage Comment:	Shipped at 4°C. Upon delivery aliquot and store at -20°C for one year. Avoid freeze/thaw cycles.
Expiry Date:	12 months

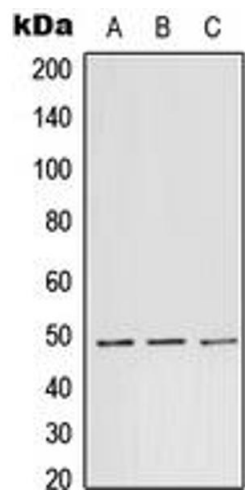
Images



Immunofluorescence

Image 1. Immunofluorescent analysis of TEAD1 staining in Raw264.7 cells. Formalin-fixed cells were permeabilized with 0.1% Triton X-100 in TBS for 5-10 minutes and blocked with 3% BSA-PBS for 30 minutes at room temperature. Cells were probed with the primary antibody in 3% BSA-PBS and incubated overnight at 4 °C in a humidified chamber. Cells were washed with PBST and incubated with a DyLight 594-conjugated secondary antibody (red) in PBS at room

temperature in the dark. DAPI was used to stain the cell nuclei (blue).



Western Blotting

Image 2. Western blot analysis of TEAD1 expression in A431 (A), Raw264.7 (B), PC12 (C) whole cell lysates.