

Datasheet for ABIN7297114
anti-TFE3 antibody (Center)[Go to Product page](#)

2 Images

Overview

| | |
|----------------------|---|
| Quantity: | 100 µL |
| Target: | TFE3 |
| Binding Specificity: | Center |
| Reactivity: | Human, Mouse, Rat, Dog, Cow, Pig |
| Host: | Rabbit |
| Clonality: | Polyclonal |
| Conjugate: | This TFE3 antibody is un-conjugated |
| Application: | Western Blotting (WB), Immunofluorescence (IF), Immunochromatography (IC) |

Product Details

| | |
|------------------|--|
| Immunogen: | KLH-conjugated synthetic peptide encompassing a sequence within the center region of human TFE3. |
| Specificity: | Recognizes endogenous levels of TFE3 protein. |
| Characteristics: | Rabbit polyclonal antibody to TFE3 |
| Purification: | The antibody was purified by immunogen affinity chromatography. |

Target Details

| | |
|-------------------|--|
| Target: | TFE3 |
| Alternative Name: | TFE3 (TFE3 Products) |
| Background: | BHLHE33, Transcription factor E3, Class E basic helix-loop-helix protein 33, bHLHe33 |

Target Details

Gene ID: 7030, 209446

UniProt: [P19532](#), [Q64092](#)

Application Details

Application Notes: WB (1:500 - 1:1000), IF/IC (1:100 - 1:500)

Restrictions: For Research Use only

Handling

Format: Liquid

Buffer: Liquid in 0.42 % Potassium phosphate, 0.87 % Sodium chloride, pH 7.3, 30 % glycerol, and 0.01 % sodium azide.

Preservative: Sodium azide

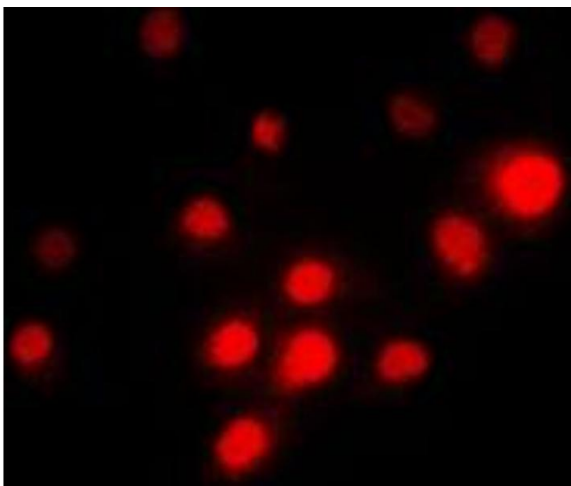
Precaution of Use: This product contains Sodium azide: a POISONOUS AND HAZARDOUS SUBSTANCE which should be handled by trained staff only.

Storage: -20 °C

Storage Comment: Shipped at 4°C. Upon delivery aliquot and store at -20°C for one year. Avoid freeze/thaw cycles.

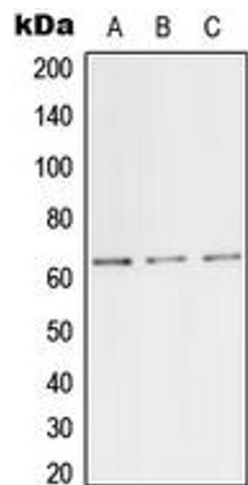
Expiry Date: 12 months

Images



Immunofluorescence

Image 1. Immunofluorescent analysis of TFE3 staining in PC12 cells. Formalin-fixed cells were permeabilized with 0.1% Triton X-100 in TBS for 5-10 minutes and blocked with 3% BSA-PBS for 30 minutes at room temperature. Cells were probed with the primary antibody in 3% BSA-PBS and incubated overnight at 4 °C in a humidified chamber. Cells were washed with PBST and incubated with a DyLight 594-conjugated secondary antibody (red) in PBS at room temperature in the dark. DAPI was used to stain the cell nuclei (blue).



Western Blotting

Image 2. Western blot analysis of TFE3 expression in HeLa (A), mouse lung (B), PC12 (C) whole cell lysates.