



[Go to Product page](#)

Datasheet for ABIN7297156  
**anti-TLE4 antibody (Center)**

2 Images

Overview

Quantity:	100 µL
Target:	TLE4
Binding Specificity:	Center
Reactivity:	Human, Rat, Mouse, Chicken
Host:	Rabbit
Clonality:	Polyclonal
Conjugate:	This TLE4 antibody is un-conjugated
Application:	Western Blotting (WB), Immunohistochemistry (IHC)

Product Details

Immunogen:	KLH-conjugated synthetic peptide encompassing a sequence within the center region of human TLE4.
Specificity:	Recognizes endogenous levels of TLE4 protein.
Characteristics:	Rabbit polyclonal antibody to TLE4
Purification:	The antibody was purified by immunogen affinity chromatography.

Target Details

Target:	TLE4
Alternative Name:	TLE4 ( <a href="#">TLE4 Products</a> )
Background:	KIAA1261, Transducin-like enhancer protein 4

## Target Details

Gene ID:	7091, 21888, 25565
UniProt:	<a href="#">Q04727</a> , <a href="#">Q62441</a> , <a href="#">Q07141</a>
Pathways:	<a href="#">WNT Signaling</a>

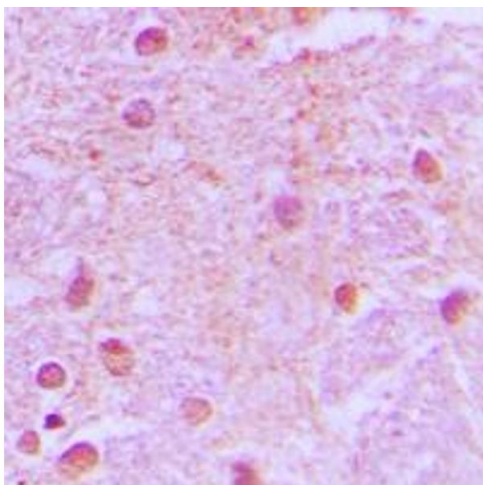
## Application Details

Application Notes:	WB (1:500 - 1:1000), IH (1:100 - 1:200)
Restrictions:	For Research Use only

## Handling

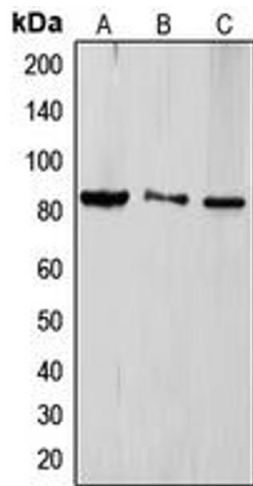
Format:	Liquid
Buffer:	Liquid in 0.42 % Potassium phosphate, 0.87 % Sodium chloride, pH 7.3, 30 % glycerol, and 0.01 % sodium azide.
Preservative:	Sodium azide
Precaution of Use:	This product contains Sodium azide: a POISONOUS AND HAZARDOUS SUBSTANCE which should be handled by trained staff only.
Storage:	-20 °C
Storage Comment:	Shipped at 4°C. Upon delivery aliquot and store at -20°C for one year. Avoid freeze/thaw cycles.
Expiry Date:	12 months

## Images



### Immunohistochemistry

**Image 1.** Immunohistochemical analysis of TLE4 staining in human brain formalin fixed paraffin embedded tissue section. The section was pre-treated using heat mediated antigen retrieval with sodium citrate buffer (pH 6.0). The section was then incubated with the antibody at room temperature and detected using an HRP conjugated compact polymer system. DAB was used as the chromogen. The section was then counterstained with haematoxylin and mounted with DPX.



### Western Blotting

**Image 2.** Western blot analysis of TLE4 expression in HeLa (A), Jurkat (B), HEK293T (C) whole cell lysates.