

Datasheet for ABIN7297166  
**anti-IGKV1-27 antibody (Center)**

## 3 Images

[Go to Product page](#)

## Overview

Quantity:	100 µL
Target:	IGKV1-27
Binding Specificity:	Center
Reactivity:	Human, Mouse, Rat
Host:	Rabbit
Clonality:	Polyclonal
Conjugate:	This IGKV1-27 antibody is un-conjugated
Application:	Western Blotting (WB), Immunofluorescence (IF), Immunohistochemistry (IHC), Immunochromatography (IC)

## Product Details

Immunogen:	KLH-conjugated synthetic peptide encompassing a sequence within the center region of human A20.
Specificity:	Recognizes endogenous levels of A20 protein.
Characteristics:	Rabbit polyclonal antibody to A20
Purification:	The antibody was purified by immunogen affinity chromatography.

## Target Details

Target:	IGKV1-27
Alternative Name:	A20 ( <a href="#">IGKV1-27 Products</a> )

## Target Details

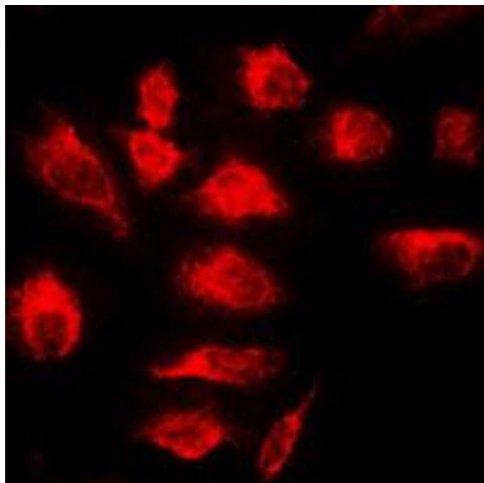
Background:	OTUD7C, Tumor necrosis factor alpha-induced protein 3, TNF alpha-induced protein 3, OTU domain-containing protein 7C, Putative DNA-binding protein A20, Zinc finger protein A20
Gene ID:	7128, 21929
UniProt:	<a href="#">P21580</a> , <a href="#">Q60769</a>
Pathways:	<a href="#">Activation of Innate immune Response</a>

## Application Details

Application Notes:	WB (1:500 - 1:1000), IH (1:100 - 1:200), IF/IC (1:100 - 1:500)
Restrictions:	For Research Use only

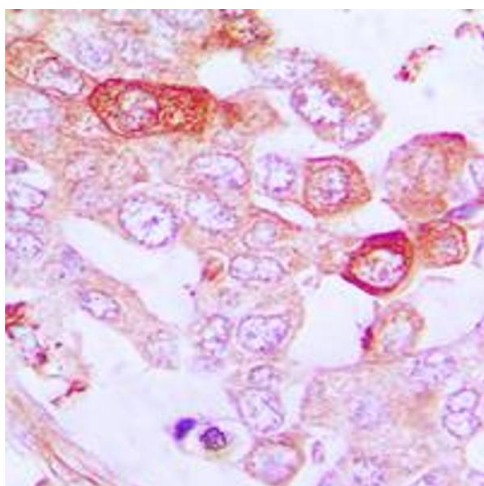
## Handling

Format:	Liquid
Buffer:	Liquid in 0.42 % Potassium phosphate, 0.87 % Sodium chloride, pH 7.3, 30 % glycerol, and 0.01 % sodium azide.
Preservative:	Sodium azide
Precaution of Use:	This product contains Sodium azide: a POISONOUS AND HAZARDOUS SUBSTANCE which should be handled by trained staff only.
Storage:	-20 °C
Storage Comment:	Shipped at 4°C. Upon delivery aliquot and store at -20°C for one year. Avoid freeze/thaw cycles.
Expiry Date:	12 months



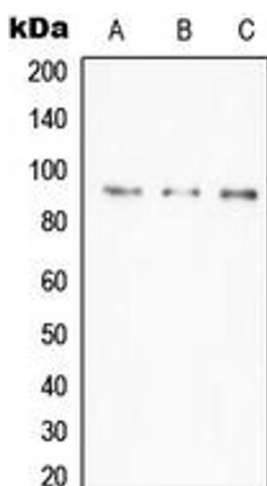
### Immunofluorescence

**Image 1.** Immunofluorescent analysis of A20 staining in HeLa cells. Formalin-fixed cells were permeabilized with 0.1% Triton X-100 in TBS for 5-10 minutes and blocked with 3% BSA-PBS for 30 minutes at room temperature. Cells were probed with the primary antibody in 3% BSA-PBS and incubated overnight at 4 °C in a humidified chamber. Cells were washed with PBST and incubated with a DyLight 594-conjugated secondary antibody (red) in PBS at room temperature in the dark. DAPI was used to stain the cell nuclei (blue).



### Immunohistochemistry

**Image 2.** Immunohistochemical analysis of A20 staining in human lung cancer formalin fixed paraffin embedded tissue section. The section was pre-treated using heat mediated antigen retrieval with sodium citrate buffer (pH 6.0). The section was then incubated with the antibody at room temperature and detected using an HRP conjugated compact polymer system. DAB was used as the chromogen. The section was then counterstained with haematoxylin and mounted with DPX.



### Western Blotting

**Image 3.** Western blot analysis of A20 expression in HeLa (A), Daudi (B), RAW264.7 (C) whole cell lysates.