



Datasheet for ABIN7297180

## anti-Topoisomerase II alpha antibody (N-Term)



[Go to Product page](#)

### 3 Images

#### Overview

Quantity:	100 µL
Target:	Topoisomerase II alpha (TOP2A)
Binding Specificity:	N-Term
Reactivity:	Human
Host:	Rabbit
Clonality:	Polyclonal
Conjugate:	This Topoisomerase II alpha antibody is un-conjugated
Application:	Western Blotting (WB), Immunohistochemistry (IHC), Immunofluorescence (IF), Immunoprecipitation (IP), Immunochromatography (IC)

#### Product Details

Immunogen:	KLH-conjugated synthetic peptide encompassing a sequence within the N-term region of human Topoisomerase 2 alpha.
Specificity:	Recognizes endogenous levels of Topoisomerase 2 alpha protein.
Characteristics:	Rabbit polyclonal antibody to Topoisomerase 2 alpha
Purification:	The antibody was purified by immunogen affinity chromatography.

#### Target Details

Target:	Topoisomerase II alpha (TOP2A)
Alternative Name:	Topoisomerase 2 alpha ( <a href="#">TOP2A Products</a> )

## Target Details

Background:	TOP2, DNA topoisomerase 2-alpha, DNA topoisomerase II, alpha isozyme
Gene ID:	7153
UniProt:	<a href="#">P11388</a>
Pathways:	<a href="#">Cell Division Cycle, Mitotic G1-G1/S Phases</a>

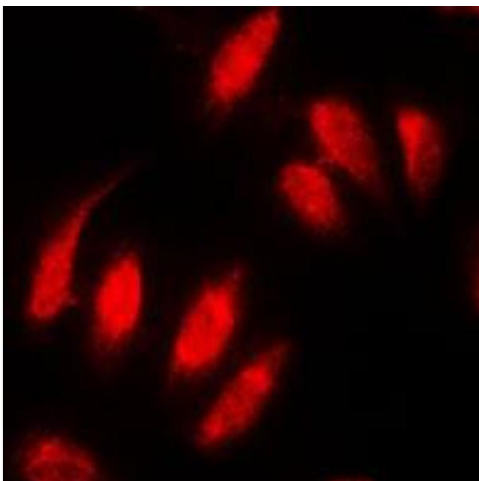
## Application Details

Application Notes:	WB (1:500 - 1:1000), IH (1:100 - 1:200), IF/IC (1:100 - 1:500), IP (1:10 - 1:100)
Restrictions:	For Research Use only

## Handling

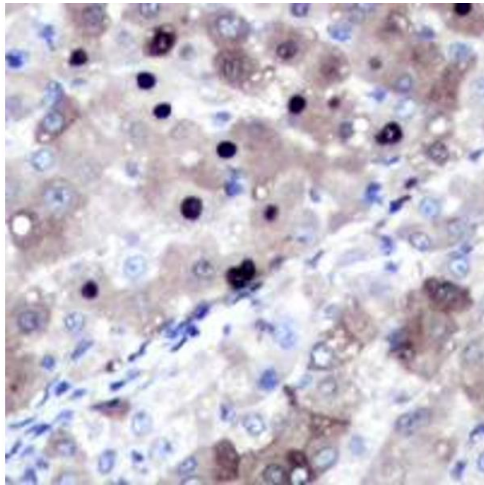
Format:	Liquid
Buffer:	Liquid in 0.42 % Potassium phosphate, 0.87 % Sodium chloride, pH 7.3, 30 % glycerol, and 0.01 % sodium azide.
Preservative:	Sodium azide
Precaution of Use:	This product contains Sodium azide: a POISONOUS AND HAZARDOUS SUBSTANCE which should be handled by trained staff only.
Storage:	-20 °C
Storage Comment:	Shipped at 4°C. Upon delivery aliquot and store at -20°C for one year. Avoid freeze/thaw cycles.
Expiry Date:	12 months

## Images



### Immunofluorescence

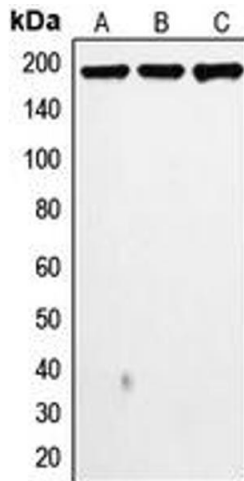
**Image 1.** Immunofluorescent analysis of Topoisomerase 2 alpha staining in MDAMB231 cells. Formalin-fixed cells were permeabilized with 0.1% Triton X-100 in TBS for 5-10 minutes and blocked with 3% BSA-PBS for 30 minutes at room temperature. Cells were probed with the primary antibody in 3% BSA-PBS and incubated overnight at 4 °C in a humidified chamber. Cells were washed with PBST and incubated with a DyLight 594-conjugated secondary



antibody (red) in PBS at room temperature in the dark. DAPI was used to stain the cell nuclei (blue).

### Immunohistochemistry

**Image 2.** Immunohistochemical analysis of Topoisomerase 2 alpha staining in human liver cancer formalin fixed paraffin embedded tissue section. The section was pre-treated using heat mediated antigen retrieval with sodium citrate buffer (pH 6.0). The section was then incubated with the antibody at room temperature and detected using an HRP conjugated compact polymer system. DAB was used as the chromogen. The section was then counterstained with haematoxylin and mounted with DPX.



### Western Blotting

**Image 3.** Western blot analysis of Topoisomerase 2 alpha expression in MDAMB468 (A), MDAMB231 (B), HeLa (C) whole cell lysates.