

Datasheet for ABIN7297204
anti-TPT1 antibody (Center)

3 Images

[Go to Product page](#)

Overview

Quantity:	100 µL
Target:	TPT1
Binding Specificity:	Center
Reactivity:	Human, Cow, Pig, Rabbit
Host:	Rabbit
Clonality:	Polyclonal
Conjugate:	This TPT1 antibody is un-conjugated
Application:	Western Blotting (WB), Immunohistochemistry (IHC), Immunofluorescence (IF), Immunoprecipitation (IP), Immunochromatography (IC)

Product Details

Immunogen:	KLH-conjugated synthetic peptide encompassing a sequence within the center region of human TCTP.
Specificity:	Recognizes endogenous levels of TCTP protein.
Characteristics:	Rabbit polyclonal antibody to TCTP
Purification:	The antibody was purified by immunogen affinity chromatography.

Target Details

Target:	TPT1
Alternative Name:	TCTP (TPT1 Products)

Target Details

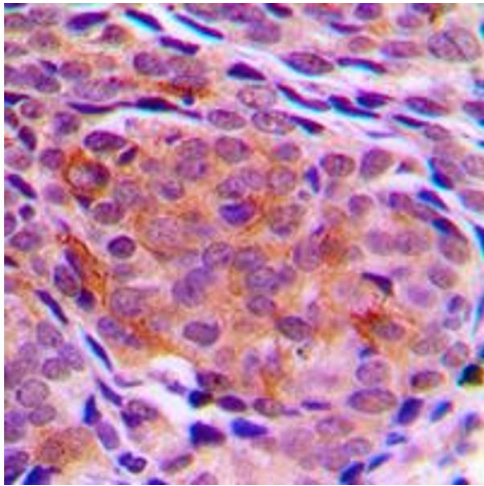
Background:	Translationally-controlled tumor protein, TCTP, Fortilin, Histamine-releasing factor, HRF, p23
Gene ID:	7178
UniProt:	P13693
Pathways:	Response to Water Deprivation , Regulation of Cell Size , Negative Regulation of intrinsic apoptotic Signaling

Application Details

Application Notes:	WB (1:500 - 1:1000), IH (1:100 - 1:200), IF/IC (1:100 - 1:500), IP (1:10 - 1:100)
Restrictions:	For Research Use only

Handling

Format:	Liquid
Buffer:	Liquid in 0.42 % Potassium phosphate, 0.87 % Sodium chloride, pH 7.3, 30 % glycerol, and 0.01 % sodium azide.
Preservative:	Sodium azide
Precaution of Use:	This product contains Sodium azide: a POISONOUS AND HAZARDOUS SUBSTANCE which should be handled by trained staff only.
Storage:	-20 °C
Storage Comment:	Shipped at 4°C. Upon delivery aliquot and store at -20°C for one year. Avoid freeze/thaw cycles.
Expiry Date:	12 months

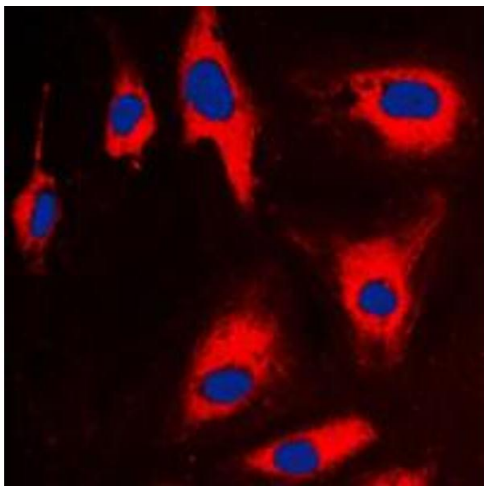
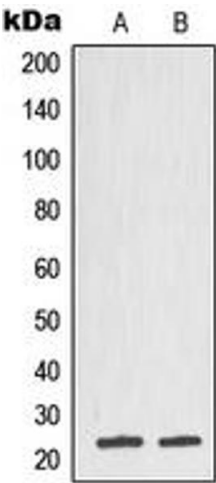


Immunohistochemistry

Image 1. Immunohistochemical analysis of TCTP staining in human breast cancer formalin fixed paraffin embedded tissue section. The section was pre-treated using heat mediated antigen retrieval with sodium citrate buffer (pH 6.0). The section was then incubated with the antibody at room temperature and detected using an HRP conjugated compact polymer system. DAB was used as the chromogen. The section was then counterstained with haematoxylin and mounted with DPX.

Western Blotting

Image 2. Western blot analysis of TCTP expression in DU145 (A), CCRFCCEM (B) whole cell lysates.



Immunofluorescence

Image 3. Immunofluorescent analysis of TCTP staining in CCRFCCEM cells. Formalin-fixed cells were permeabilized with 0.1% Triton X-100 in TBS for 5-10 minutes and blocked with 3% BSA-PBS for 30 minutes at room temperature. Cells were probed with the primary antibody in 3% BSA-PBS and incubated overnight at 4 °C in a humidified chamber. Cells were washed with PBST and incubated with a DyLight 594-conjugated secondary antibody (red) in PBS at room temperature in the dark. DAPI was used to stain the cell nuclei (blue).