



Datasheet for ABIN7297210
anti-TUBG1 antibody (C-Term)



[Go to Product page](#)

2 Images

Overview

Quantity:	100 µL
Target:	TUBG1
Binding Specificity:	C-Term
Reactivity:	Human, Monkey
Host:	Rabbit
Clonality:	Polyclonal
Conjugate:	This TUBG1 antibody is un-conjugated
Application:	Western Blotting (WB), Immunohistochemistry (IHC)

Product Details

Immunogen:	KLH-conjugated synthetic peptide encompassing a sequence within the C-term region of human Gamma-tubulin.
Specificity:	Recognizes endogenous levels of Gamma-tubulin protein.
Characteristics:	Rabbit polyclonal antibody to Gamma-tubulin
Purification:	The antibody was purified by immunogen affinity chromatography.

Target Details

Target:	TUBG1
Alternative Name:	gamma-Tubulin (TUBG1 Products)
Background:	TUBG, Tubulin gamma-1 chain, Gamma-1-tubulin, Gamma-tubulin complex component 1, GCP-

Target Details

1

Gene ID: 7283

UniProt: [P23258](#)

Pathways: [Microtubule Dynamics, M Phase](#)

Application Details

Application Notes: WB (1:500 - 1:1000), IH (1:100 - 1:200)

Restrictions: For Research Use only

Handling

Format: Liquid

Buffer: Liquid in 0.42 % Potassium phosphate, 0.87 % Sodium chloride, pH 7.3, 30 % glycerol, and 0.01 % sodium azide.

Preservative: Sodium azide

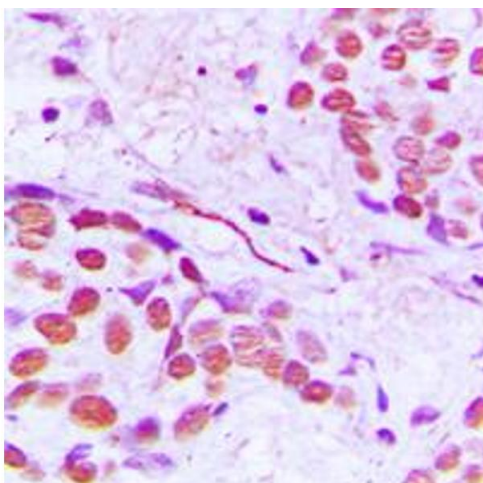
Precaution of Use: This product contains Sodium azide: a POISONOUS AND HAZARDOUS SUBSTANCE which should be handled by trained staff only.

Storage: -20 °C

Storage Comment: Shipped at 4°C. Upon delivery aliquot and store at -20°C for one year. Avoid freeze/thaw cycles.

Expiry Date: 12 months

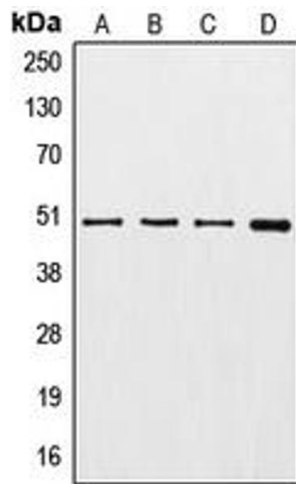
Images



Immunohistochemistry

Image 1. Immunohistochemical analysis of Gamma-tubulin staining in human breast cancer formalin fixed paraffin embedded tissue section. The section was pre-treated using heat mediated antigen retrieval with sodium citrate buffer (pH 6.0). The section was then incubated with the antibody at room temperature and detected using an HRP conjugated compact polymer system. DAB was used as the chromogen. The section was then counterstained with

haematoxylin and mounted with DPX.



Western Blotting

Image 2. Western blot analysis of Gamma-tubulin expression in A549 (A), HeLa (B), HEK293T (C), NIH3T3 (D) whole cell lysates.