

Datasheet for ABIN7297236
anti-UGT8 antibody (C-Term)



[Go to Product page](#)

1 Image

Overview

| | |
|----------------------|-------------------------------------|
| Quantity: | 100 µL |
| Target: | UGT8 |
| Binding Specificity: | C-Term |
| Reactivity: | Human, Mouse, Cow, Pig |
| Host: | Rabbit |
| Clonality: | Polyclonal |
| Conjugate: | This UGT8 antibody is un-conjugated |
| Application: | Western Blotting (WB) |

Product Details

| | |
|------------------|--|
| Immunogen: | KLH-conjugated synthetic peptide encompassing a sequence within the C-term region of human UGT8. |
| Specificity: | Recognizes endogenous levels of UGT8 protein. |
| Characteristics: | Rabbit polyclonal antibody to UGT8 |
| Purification: | The antibody was purified by immunogen affinity chromatography. |

Target Details

| | |
|-------------------|---|
| Target: | UGT8 |
| Alternative Name: | UGT8 (UGT8 Products) |
| Background: | CGT, UGT4, 2-hydroxyacylsphingosine 1-beta-galactosyltransferase, Ceramide UDP- |

Target Details

| | |
|-----------|---|
| | galactosyltransferase, Cerebroside synthase, UDP-galactose-ceramide galactosyltransferase |
| Gene ID: | 7368, 22239 |
| UniProt: | Q16880 , Q64676 |
| Pathways: | Cell-Cell Junction Organization |

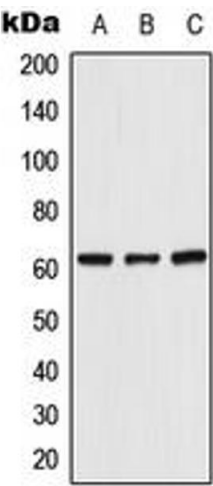
Application Details

| | |
|--------------------|-----------------------|
| Application Notes: | WB (1:500 - 1:1000) |
| Restrictions: | For Research Use only |

Handling

| | |
|--------------------|--|
| Format: | Liquid |
| Buffer: | Liquid in 0.42 % Potassium phosphate, 0.87 % Sodium chloride, pH 7.3, 30 % glycerol, and 0.01 % sodium azide. |
| Preservative: | Sodium azide |
| Precaution of Use: | This product contains Sodium azide: a POISONOUS AND HAZARDOUS SUBSTANCE which should be handled by trained staff only. |
| Storage: | -20 °C |
| Storage Comment: | Shipped at 4°C. Upon delivery aliquot and store at -20°C for one year. Avoid freeze/thaw cycles. |
| Expiry Date: | 12 months |

Images



Western Blotting

Image 1. Western blot analysis of UGT8 expression in HeLa (A), Raw264.7 (B), SP2/0 (C) whole cell lysates.