

Datasheet for ABIN7297256
anti-VEGFB antibody (Center)



[Go to Product page](#)

2 Images

Overview

| | |
|----------------------|--|
| Quantity: | 100 µL |
| Target: | VEGFB |
| Binding Specificity: | Center |
| Reactivity: | Human, Monkey |
| Host: | Rabbit |
| Clonality: | Polyclonal |
| Conjugate: | This VEGFB antibody is un-conjugated |
| Application: | Western Blotting (WB), Immunohistochemistry (IHC), ELISA |

Product Details

| | |
|------------------|---|
| Immunogen: | KLH-conjugated synthetic peptide encompassing a sequence within the center region of human VEGFB. |
| Specificity: | Recognizes endogenous levels of VEGFB protein. |
| Characteristics: | Rabbit polyclonal antibody to VEGFB |
| Purification: | The antibody was purified by immunogen affinity chromatography. |

Target Details

| | |
|-------------------|---|
| Target: | VEGFB |
| Alternative Name: | VEGFB (VEGFB Products) |
| Background: | VRF, Vascular endothelial growth factor B, VEGF-B, VEGF-related factor, VRF |

Target Details

| | |
|-----------|--|
| Gene ID: | 7423 |
| UniProt: | P49765 |
| Pathways: | RTK Signaling , Signaling Events mediated by VEGFR1 and VEGFR2 , VEGFR1 Specific Signals |

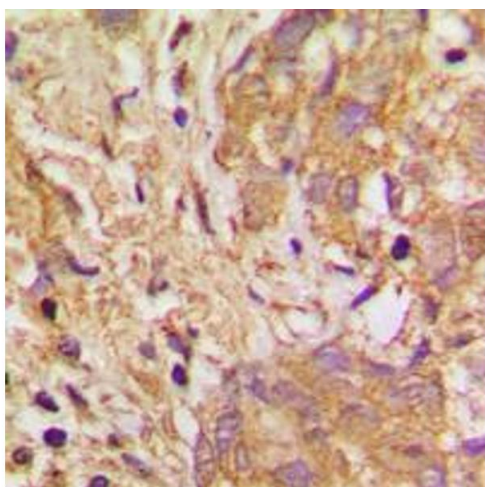
Application Details

| | |
|--------------------|--|
| Application Notes: | SE (Use a concentration of 0.5 µg/mL), WB (1:500 - 1:1000), IH (1:100 - 1:200) |
| Restrictions: | For Research Use only |

Handling

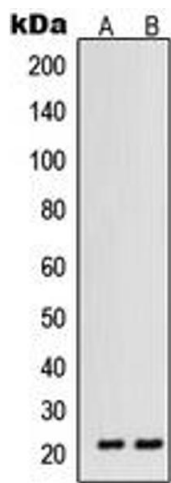
| | |
|--------------------|--|
| Format: | Liquid |
| Buffer: | Liquid in 0.42 % Potassium phosphate, 0.87 % Sodium chloride, pH 7.3, 30 % glycerol, and 0.01 % sodium azide. |
| Preservative: | Sodium azide |
| Precaution of Use: | This product contains Sodium azide: a POISONOUS AND HAZARDOUS SUBSTANCE which should be handled by trained staff only. |
| Storage: | -20 °C |
| Storage Comment: | Shipped at 4°C. Upon delivery aliquot and store at -20°C for one year. Avoid freeze/thaw cycles. |
| Expiry Date: | 12 months |

Images



Immunohistochemistry

Image 1. Immunohistochemical analysis of VEGFB staining in human breast cancer formalin fixed paraffin embedded tissue section. The section was pre-treated using heat mediated antigen retrieval with sodium citrate buffer (pH 6.0). The section was then incubated with the antibody at room temperature and detected using an HRP conjugated compact polymer system. DAB was used as the chromogen. The section was then counterstained with haematoxylin and mounted with DPX.



Western Blotting

Image 2. Western blot analysis of VEGFB expression in HT1080 (A), ACHN (B) whole cell lysates.