

Datasheet for ABIN7297282
anti-XPA antibody (C-Term)[Go to Product page](#)

2 Images

Overview

Quantity:	100 µL
Target:	XPA
Binding Specificity:	C-Term
Reactivity:	Human, Mouse, Dog
Host:	Rabbit
Clonality:	Polyclonal
Conjugate:	This XPA antibody is un-conjugated
Application:	Western Blotting (WB), Immunohistochemistry (IHC)

Product Details

Immunogen:	KLH-conjugated synthetic peptide encompassing a sequence within the C-term region of human XPA.
Specificity:	Recognizes endogenous levels of XPA protein.
Characteristics:	Rabbit polyclonal antibody to XPA
Purification:	The antibody was purified by immunogen affinity chromatography.

Target Details

Target:	XPA
Alternative Name:	XPA (XPA Products)
Background:	XPAC, DNA repair protein complementing XP-A cells, Xeroderma pigmentosum group A-

Target Details

	complementing protein
Gene ID:	7507, 22590
UniProt:	P23025 , Q64267
Pathways:	DNA Damage Repair

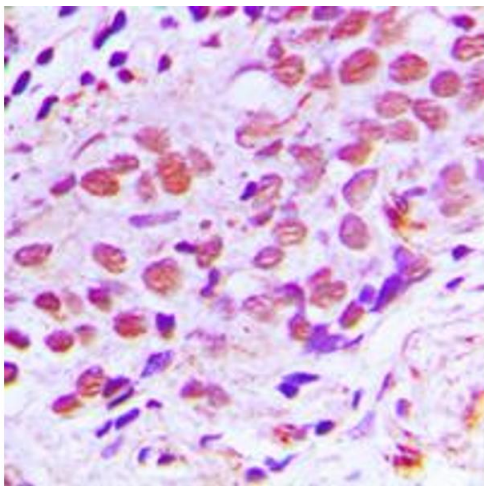
Application Details

Application Notes:	WB (1:500 - 1:1000), IH (1:100 - 1:200)
Restrictions:	For Research Use only

Handling

Format:	Liquid
Buffer:	Liquid in 0.42 % Potassium phosphate, 0.87 % Sodium chloride, pH 7.3, 30 % glycerol, and 0.01 % sodium azide.
Preservative:	Sodium azide
Precaution of Use:	This product contains Sodium azide: a POISONOUS AND HAZARDOUS SUBSTANCE which should be handled by trained staff only.
Storage:	-20 °C
Storage Comment:	Shipped at 4°C. Upon delivery aliquot and store at -20°C for one year. Avoid freeze/thaw cycles.
Expiry Date:	12 months

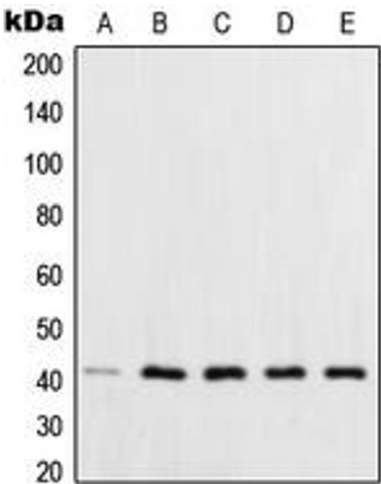
Images



Immunohistochemistry

Image 1. Immunohistochemical analysis of XPA staining in human breast cancer formalin fixed paraffin embedded tissue section. The section was pre-treated using heat mediated antigen retrieval with sodium citrate buffer (pH 6.0). The section was then incubated with the antibody at room temperature and detected using an HRP conjugated compact polymer system. DAB was used as the chromogen. The section was then counterstained with

haematoxylin and mounted with DPX.



Western Blotting

Image 2. Western blot analysis of XPA expression in HCT116 (A), HeLa (B), HepG2 (C), MCF7 (D), NIH3T3 (E) whole cell lysates.