



Datasheet for ABIN7297286
anti-XRCC2 antibody (C-Term)



[Go to Product page](#)

2 Images

Overview

Quantity:	100 µL
Target:	XRCC2
Binding Specificity:	C-Term
Reactivity:	Human, Monkey
Host:	Rabbit
Clonality:	Polyclonal
Conjugate:	This XRCC2 antibody is un-conjugated
Application:	Western Blotting (WB), Immunohistochemistry (IHC)

Product Details

Immunogen:	KLH-conjugated synthetic peptide encompassing a sequence within the C-term region of human XRCC2.
Specificity:	Recognizes endogenous levels of XRCC2 protein.
Characteristics:	Rabbit polyclonal antibody to XRCC2
Purification:	The antibody was purified by immunogen affinity chromatography.

Target Details

Target:	XRCC2
Alternative Name:	XRCC2 (XRCC2 Products)
Background:	DNA repair protein XRCC2, X-ray repair cross-complementing protein 2

Target Details

Gene ID:	7516
UniProt:	O43543
Pathways:	DNA Damage Repair

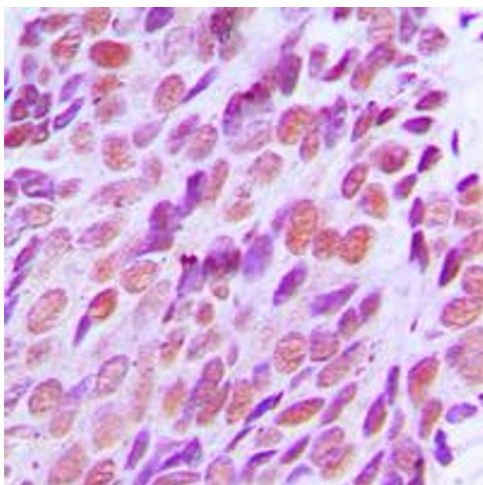
Application Details

Application Notes:	WB (1:500 - 1:1000), IH (1:100 - 1:200)
Restrictions:	For Research Use only

Handling

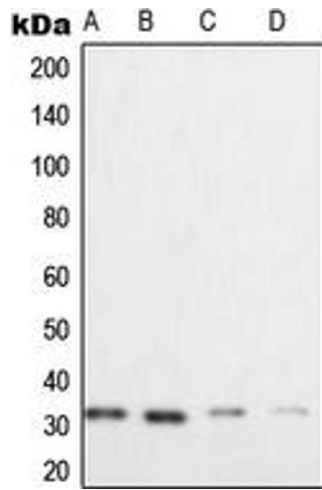
Format:	Liquid
Buffer:	Liquid in 0.42 % Potassium phosphate, 0.87 % Sodium chloride, pH 7.3, 30 % glycerol, and 0.01 % sodium azide.
Preservative:	Sodium azide
Precaution of Use:	This product contains Sodium azide: a POISONOUS AND HAZARDOUS SUBSTANCE which should be handled by trained staff only.
Storage:	-20 °C
Storage Comment:	Shipped at 4°C. Upon delivery aliquot and store at -20°C for one year. Avoid freeze/thaw cycles.
Expiry Date:	12 months

Images



Immunohistochemistry

Image 1. Immunohistochemical analysis of XRCC2 staining in human breast cancer formalin fixed paraffin embedded tissue section. The section was pre-treated using heat mediated antigen retrieval with sodium citrate buffer (pH 6.0). The section was then incubated with the antibody at room temperature and detected using an HRP conjugated compact polymer system. DAB was used as the chromogen. The section was then counterstained with haematoxylin and mounted with DPX.



Western Blotting

Image 2. Western blot analysis of XRCC2 expression in HeLa (A), Raji (B), SW480 (C), Caco2 (D) whole cell lysates.