

Datasheet for ABIN7297298
anti-YWHAE antibody (C-Term)



[Go to Product page](#)

2 Images

Overview

Quantity:	100 µL
Target:	YWHAE
Binding Specificity:	C-Term
Reactivity:	Human, Mouse, Rat, Zebrafish (Danio rerio), Cow, Sheep, Chicken, Monkey
Host:	Rabbit
Clonality:	Polyclonal
Conjugate:	This YWHAE antibody is un-conjugated
Application:	Western Blotting (WB), Immunofluorescence (IF), Immunochromatography (IC)

Product Details

Immunogen:	KLH-conjugated synthetic peptide encompassing a sequence within the C-term region of human 14-3-3 epsilon.
Specificity:	Recognizes endogenous levels of 14-3-3 epsilon protein.
Characteristics:	Rabbit polyclonal antibody to 14-3-3 epsilon
Purification:	The antibody was purified by immunogen affinity chromatography.

Target Details

Target:	YWHAE
Alternative Name:	14-3-3 epsilon (YWHAE Products)
Background:	14-3-3 protein epsilon, 14-3-3E

Target Details

Gene ID:	7531, 22627, 29753
UniProt:	P62258 , P62259 , P62260
Pathways:	Neurotrophin Signaling Pathway , Myometrial Relaxation and Contraction , M Phase

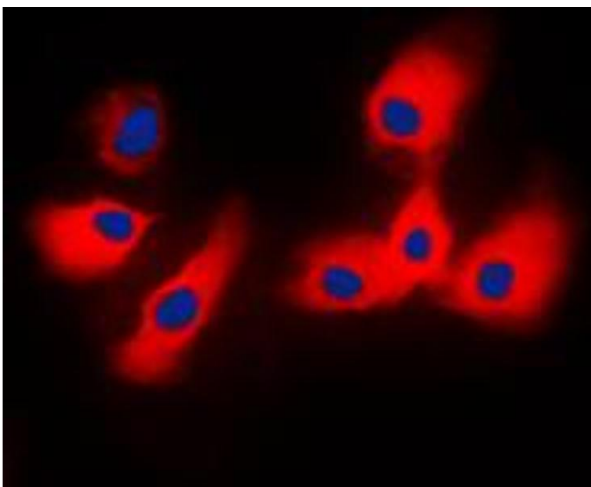
Application Details

Application Notes:	WB (1:500 - 1:1000), IF/IC (1:100 - 1:500)
Restrictions:	For Research Use only

Handling

Format:	Liquid
Buffer:	Liquid in 0.42 % Potassium phosphate, 0.87 % Sodium chloride, pH 7.3, 30 % glycerol, and 0.01 % sodium azide.
Preservative:	Sodium azide
Precaution of Use:	This product contains Sodium azide: a POISONOUS AND HAZARDOUS SUBSTANCE which should be handled by trained staff only.
Storage:	-20 °C
Storage Comment:	Shipped at 4°C. Upon delivery aliquot and store at -20°C for one year. Avoid freeze/thaw cycles.
Expiry Date:	12 months

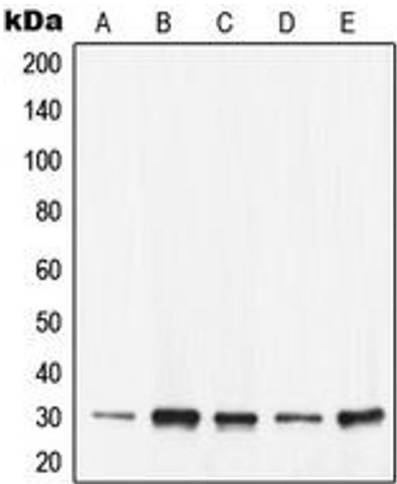
Images



Immunofluorescence

Image 1. Immunofluorescent analysis of 14-3-3 epsilon staining in NIH3T3 cells. Formalin-fixed cells were permeabilized with 0.1% Triton X-100 in TBS for 5-10 minutes and blocked with 3% BSA-PBS for 30 minutes at room temperature. Cells were probed with the primary antibody in 3% BSA-PBS and incubated overnight at 4 °C in a humidified chamber. Cells were washed with PBST and incubated with a DyLight 594-conjugated secondary antibody (red) in PBS at room temperature in the dark. DAPI

was used to stain the cell nuclei (blue).



Western Blotting

Image 2. Western blot analysis of 14-3-3 epsilon expression in KNRK (A), SW480 (B), Caco2 (C), NIH3T3 (D), H9C2 (E) whole cell lysates.