

Datasheet for ABIN7297300

## anti-14-3-3 gamma antibody (Center)

### 2 Images



[Go to Product page](#)

### Overview

Quantity:	100 µL
Target:	14-3-3 gamma (YWHAG1)
Binding Specificity:	Center
Reactivity:	Human, Mouse, Rat, Zebrafish (Danio rerio), Cow, Chicken
Host:	Rabbit
Clonality:	Polyclonal
Conjugate:	This 14-3-3 gamma antibody is un-conjugated
Application:	Western Blotting (WB), Immunofluorescence (IF), Immunochromatography (IC)

### Product Details

Immunogen:	KLH-conjugated synthetic peptide encompassing a sequence within the center region of human 14-3-3 gamma.
Specificity:	Recognizes endogenous levels of 14-3-3 gamma protein.
Characteristics:	Rabbit polyclonal antibody to 14-3-3 gamma
Purification:	The antibody was purified by immunogen affinity chromatography.

### Target Details

Target:	14-3-3 gamma (YWHAG1)
Alternative Name:	14-3-3 gamma ( <a href="#">YWHAG1 Products</a> )
Background:	14-3-3 protein gamma, Protein kinase C inhibitor protein 1, KCIP-1

## Target Details

Gene ID:	7532, 22628, 56010
UniProt:	<a href="#">P61981</a> , <a href="#">P61982</a> , <a href="#">P61983</a>
Pathways:	<a href="#">Myometrial Relaxation and Contraction</a> , <a href="#">M Phase</a>

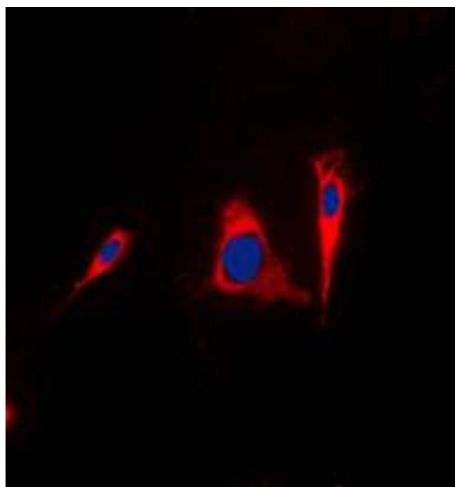
## Application Details

Application Notes:	WB (1:500 - 1:1000), IF/IC (1:100 - 1:500)
Restrictions:	For Research Use only

## Handling

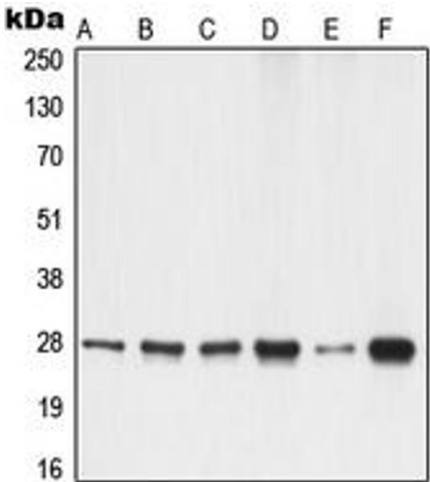
Format:	Liquid
Buffer:	Liquid in 0.42 % Potassium phosphate, 0.87 % Sodium chloride, pH 7.3, 30 % glycerol, and 0.01 % sodium azide.
Preservative:	Sodium azide
Precaution of Use:	This product contains Sodium azide: a POISONOUS AND HAZARDOUS SUBSTANCE which should be handled by trained staff only.
Storage:	-20 °C
Storage Comment:	Shipped at 4°C. Upon delivery aliquot and store at -20°C for one year. Avoid freeze/thaw cycles.
Expiry Date:	12 months

## Images



### Immunofluorescence

**Image 1.** Immunofluorescent analysis of 14-3-3 gamma staining in A431 cells. Formalin-fixed cells were permeabilized with 0.1% Triton X-100 in TBS for 5-10 minutes and blocked with 3% BSA-PBS for 30 minutes at room temperature. Cells were probed with the primary antibody in 3% BSA-PBS and incubated overnight at 4 °C in a humidified chamber. Cells were washed with PBST and incubated with a DyLight 594-conjugated secondary antibody (red) in PBS at room temperature in the dark. DAPI



was used to stain the cell nuclei (blue).

Western Blotting

**Image 2.** Western blot analysis of 14-3-3 gamma expression in A549 (A), A431 (B), K562 (C), NIH3T3 (D), PC12 (E), rat liver (F) whole cell lysates.