

Datasheet for ABIN7297372
anti-Cullin 2 antibody (C-Term)[Go to Product page](#)

3 Images

Overview

Quantity:	100 µL
Target:	Cullin 2 (CUL2)
Binding Specificity:	C-Term
Reactivity:	Human, Mouse, Rat, Dog, Cow, Chicken, Pig
Host:	Rabbit
Clonality:	Polyclonal
Conjugate:	This Cullin 2 antibody is un-conjugated
Application:	Western Blotting (WB), Immunohistochemistry (IHC), Immunofluorescence (IF), Immunochromatography (IC)

Product Details

Immunogen:	KLH-conjugated synthetic peptide encompassing a sequence within the C-term region of human Cullin 2.
Specificity:	Recognizes endogenous levels of Cullin 2 protein.
Characteristics:	Rabbit polyclonal antibody to Cullin 2
Purification:	The antibody was purified by immunogen affinity chromatography.

Target Details

Target:	Cullin 2 (CUL2)
Alternative Name:	Cullin 2 (CUL2 Products)

Target Details

Background:	Cullin-2, CUL-2
Gene ID:	8453, 71745
UniProt:	Q13617 , Q9D4H8
Pathways:	M Phase , Asymmetric Protein Localization , SARS-CoV-2 Protein Interactome

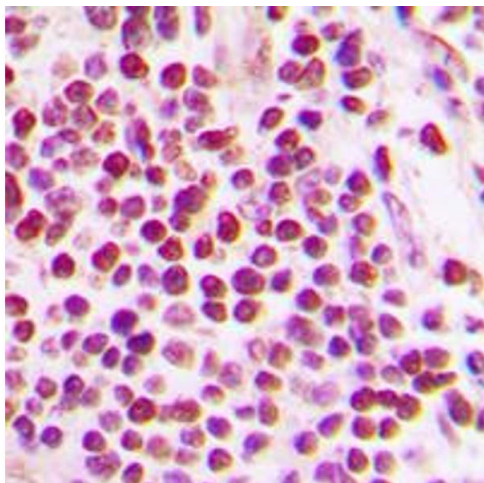
Application Details

Application Notes:	WB (1:500 - 1:1000), IH (1:100 - 1:200), IF/IC (1:100 - 1:500)
Restrictions:	For Research Use only

Handling

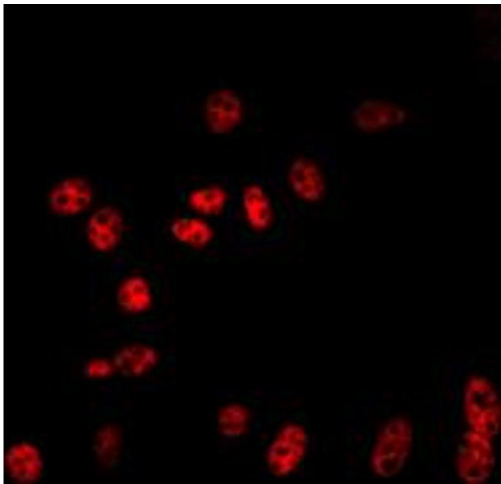
Format:	Liquid
Buffer:	Liquid in 0.42 % Potassium phosphate, 0.87 % Sodium chloride, pH 7.3, 30 % glycerol, and 0.01 % sodium azide.
Preservative:	Sodium azide
Precaution of Use:	This product contains Sodium azide: a POISONOUS AND HAZARDOUS SUBSTANCE which should be handled by trained staff only.
Storage:	-20 °C
Storage Comment:	Shipped at 4°C. Upon delivery aliquot and store at -20°C for one year. Avoid freeze/thaw cycles.
Expiry Date:	12 months

Images



Immunohistochemistry

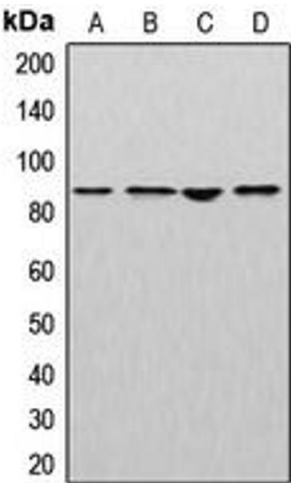
Image 1. Immunohistochemical analysis of Cullin 2 staining in human tonsil formalin fixed paraffin embedded tissue section. The section was pre-treated using heat mediated antigen retrieval with sodium citrate buffer (pH 6.0). The section was then incubated with the antibody at room temperature and detected using an HRP conjugated compact polymer system. DAB was used as the chromogen. The section was then counterstained with



haematoxylin and mounted with DPX.

Immunofluorescence

Image 2. Immunofluorescent analysis of Cullin 2 staining in NIH3T3 cells. Formalin-fixed cells were permeabilized with 0.1% Triton X-100 in TBS for 5-10 minutes and blocked with 3% BSA-PBS for 30 minutes at room temperature. Cells were probed with the primary antibody in 3% BSA-PBS and incubated overnight at 4 °C in a humidified chamber. Cells were washed with PBST and incubated with a DyLight 594-conjugated secondary antibody (red) in PBS at room temperature in the dark. DAPI was used to stain the cell nuclei (blue).



Western Blotting

Image 3. Western blot analysis of Cullin 2 expression in MCF7 (A), mouse liver (B), rat kidney (C), NIH3T3 (D) whole cell lysates.