

Datasheet for ABIN7297386
anti-SLC43A1 antibody (Center)[Go to Product page](#)

2 Images

Overview

Quantity:	100 µL
Target:	SLC43A1
Binding Specificity:	Center
Reactivity:	Human, Mouse, Rat
Host:	Rabbit
Clonality:	Polyclonal
Application:	Western Blotting (WB), Immunofluorescence (IF), Immunochromatography (IC)

Product Details

Immunogen:	KLH-conjugated synthetic peptide encompassing a sequence within the center region of human SLC43A1.
Specificity:	Recognizes endogenous levels of SLC43A1 protein.
Characteristics:	Rabbit polyclonal antibody to SLC43A1
Purification:	The antibody was purified by immunogen affinity chromatography.

Target Details

Target:	SLC43A1
Alternative Name:	SLC43A1 (SLC43A1 Products)
Background:	LAT3, PB39, POV1, Large neutral amino acids transporter small subunit 3, L-type amino acid transporter 3, Prostate cancer overexpressed gene 1 protein, Solute carrier family 43 member 1

Target Details

Gene ID:	8501, 72401
UniProt:	O75387 , Q8BSM7

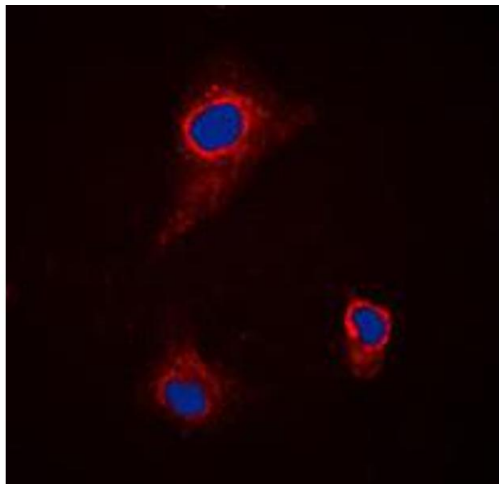
Application Details

Application Notes:	WB (1:500 - 1:1000), IF/IC (1:100 - 1:500)
Restrictions:	For Research Use only

Handling

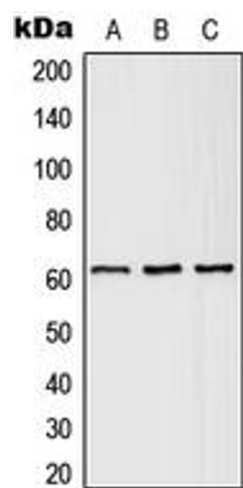
Format:	Liquid
Buffer:	Liquid in 0.42 % Potassium phosphate, 0.87 % Sodium chloride, pH 7.3, 30 % glycerol, and 0.01 % sodium azide.
Preservative:	Sodium azide
Precaution of Use:	This product contains Sodium azide: a POISONOUS AND HAZARDOUS SUBSTANCE which should be handled by trained staff only.
Storage:	-20 °C
Storage Comment:	Shipped at 4°C. Upon delivery aliquot and store at -20°C for one year. Avoid freeze/thaw cycles.
Expiry Date:	12 months

Images



Immunofluorescence

Image 1. Immunofluorescent analysis of SLC43A1 staining in H9C2 cells. Formalin-fixed cells were permeabilized with 0.1% Triton X-100 in TBS for 5-10 minutes and blocked with 3% BSA-PBS for 30 minutes at room temperature. Cells were probed with the primary antibody in 3% BSA-PBS and incubated overnight at 4 °C in a humidified chamber. Cells were washed with PBST and incubated with a DyLight 594-conjugated secondary antibody (red) in PBS at room temperature in the dark. DAPI was used to stain the cell nuclei (blue).



Western Blotting

Image 2. Western blot analysis of SLC43A1 expression in HEK293T (A), SP2/O (B), H9C2 (C) whole cell lysates.