

Datasheet for ABIN7297404  
**anti-COPS3 antibody (Center)**[Go to Product page](#)

## 3 Images

## Overview

Quantity:	100 µL
Target:	COPS3
Binding Specificity:	Center
Reactivity:	Human, Mouse, Rat, Cow, Dog, Monkey, Pig
Host:	Rabbit
Clonality:	Polyclonal
Conjugate:	This COPS3 antibody is un-conjugated
Application:	Western Blotting (WB), Immunohistochemistry (IHC), Immunofluorescence (IF), Immunochromatography (IC)

## Product Details

Immunogen:	KLH-conjugated synthetic peptide encompassing a sequence within the center region of human COPS3.
Specificity:	Recognizes endogenous levels of COPS3 protein.
Characteristics:	Rabbit polyclonal antibody to COPS3
Purification:	The antibody was purified by immunogen affinity chromatography.

## Target Details

Target:	COPS3
Alternative Name:	COPS3 ( <a href="#">COPS3 Products</a> )

## Target Details

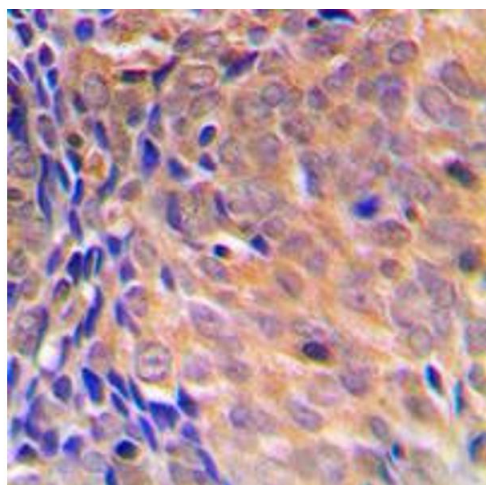
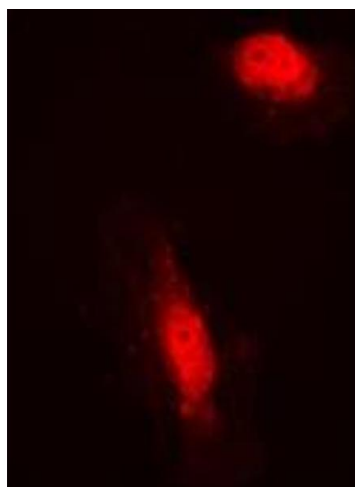
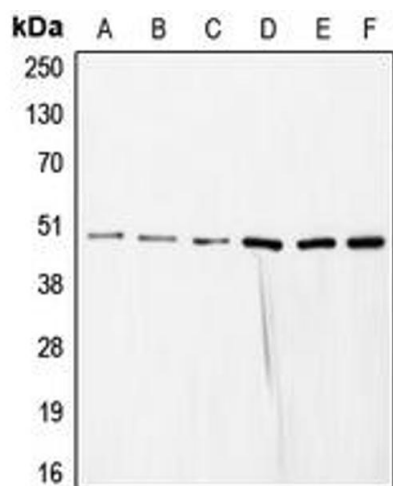
Background:	CSN3, COP9 signalosome complex subunit 3, SGN3, Signalosome subunit 3, JAB1-containing signalosome subunit 3
Gene ID:	8533, 26572, 287367
UniProt:	<a href="#">Q9UNS2</a> , <a href="#">O88543</a> , <a href="#">Q68FW9</a>
Pathways:	<a href="#">Cell Division Cycle</a>

## Application Details

Application Notes:	WB (1:500 - 1:1000), IH (1:100 - 1:200), IF/IC (1:100 - 1:500)
Restrictions:	For Research Use only

## Handling

Format:	Liquid
Buffer:	Liquid in 0.42 % Potassium phosphate, 0.87 % Sodium chloride, pH 7.3, 30 % glycerol, and 0.01 % sodium azide.
Preservative:	Sodium azide
Precaution of Use:	This product contains Sodium azide: a POISONOUS AND HAZARDOUS SUBSTANCE which should be handled by trained staff only.
Storage:	-20 °C
Storage Comment:	Shipped at 4°C. Upon delivery aliquot and store at -20°C for one year. Avoid freeze/thaw cycles.
Expiry Date:	12 months



### Western Blotting

**Image 1.** Western blot analysis of COPS3 expression in HeLa (A), SP2/0 (B), mouse liver (C), rat liver (D), NIH3T3 (E), HEK293T (F) whole cell lysates.

### Immunofluorescence

**Image 2.** Immunofluorescent analysis of COPS3 staining in HeLa cells. Formalin-fixed cells were permeabilized with 0.1% Triton X-100 in TBS for 5-10 minutes and blocked with 3% BSA-PBS for 30 minutes at room temperature. Cells were probed with the primary antibody in 3% BSA-PBS and incubated overnight at 4 °C in a humidified chamber. Cells were washed with PBST and incubated with a DyLight 594-conjugated secondary antibody (red) in PBS at room temperature in the dark. DAPI was used to stain the cell nuclei (blue).

### Immunohistochemistry

**Image 3.** Immunohistochemical analysis of COPS3 staining in human breast cancer formalin fixed paraffin embedded tissue section. The section was pre-treated using heat mediated antigen retrieval with sodium citrate buffer (pH 6.0). The section was then incubated with the antibody at room temperature and detected using an HRP conjugated compact polymer system. DAB was used as the chromogen. The section was then counterstained with haematoxylin and mounted with DPX.