

Datasheet for ABIN7297422
anti-RTCD1 antibody (C-Term)

2 Images

[Go to Product page](#)

Overview

Quantity:	100 µL
Target:	RTCD1
Binding Specificity:	C-Term
Reactivity:	Human, Mouse, Rat
Host:	Rabbit
Clonality:	Polyclonal
Conjugate:	This RTCD1 antibody is un-conjugated
Application:	Western Blotting (WB), Immunohistochemistry (IHC)

Product Details

Immunogen:	KLH-conjugated synthetic peptide encompassing a sequence within the C-term region of human RPC.
Specificity:	Recognizes endogenous levels of RPC protein.
Characteristics:	Rabbit polyclonal antibody to RPC
Purification:	The antibody was purified by immunogen affinity chromatography.

Target Details

Target:	RTCD1
Alternative Name:	RPC (RTCD1 Products)
Background:	RPC, RPC1, RTC1, RTCD1, RNA 3'-terminal phosphate cyclase, RNA cyclase, RNA-3'-phosphate

Target Details

	cyclase, RNA terminal phosphate cyclase domain-containing protein 1, RTC domain-containing protein 1
Gene ID:	8634, 66368
UniProt:	O00442 , Q9D7H3

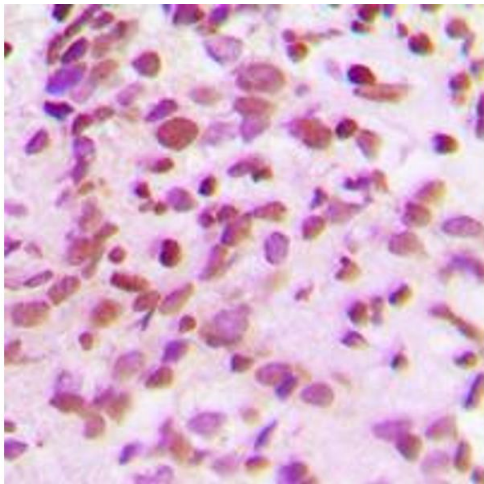
Application Details

Application Notes:	WB (1:500 - 1:1000), IH (1:100 - 1:200)
Restrictions:	For Research Use only

Handling

Format:	Liquid
Buffer:	Liquid in 0.42 % Potassium phosphate, 0.87 % Sodium chloride, pH 7.3, 30 % glycerol, and 0.01 % sodium azide.
Preservative:	Sodium azide
Precaution of Use:	This product contains Sodium azide: a POISONOUS AND HAZARDOUS SUBSTANCE which should be handled by trained staff only.
Storage:	-20 °C
Storage Comment:	Shipped at 4°C. Upon delivery aliquot and store at -20°C for one year. Avoid freeze/thaw cycles.
Expiry Date:	12 months

Images



Immunohistochemistry

Image 1. Immunohistochemical analysis of RPC staining in human breast cancer formalin fixed paraffin embedded tissue section. The section was pre-treated using heat mediated antigen retrieval with sodium citrate buffer (pH 6.0). The section was then incubated with the antibody at room temperature and detected using an HRP conjugated compact polymer system. DAB was used as the chromogen. The section was then counterstained with

haematoxylin and mounted with DPX.

Western Blotting

Image 2. Western blot analysis of RPC expression in HeLa (A), NIH3T3 (B), rat stomach (C) whole cell lysates.

