

Datasheet for ABIN7297464
anti-TRIM24 antibody (C-Term)[Go to Product page](#)

2 Images

Overview

Quantity:	100 µL
Target:	TRIM24
Binding Specificity:	C-Term
Reactivity:	Human, Cow, Dog, Pig, Monkey
Host:	Rabbit
Clonality:	Polyclonal
Conjugate:	This TRIM24 antibody is un-conjugated
Application:	Western Blotting (WB), Immunohistochemistry (IHC)

Product Details

Immunogen:	KLH-conjugated synthetic peptide encompassing a sequence within the C-term region of human TIF1 alpha.
Specificity:	Recognizes endogenous levels of TIF1 alpha protein.
Characteristics:	Rabbit polyclonal antibody to TIF1 alpha
Purification:	The antibody was purified by immunogen affinity chromatography.

Target Details

Target:	TRIM24
Alternative Name:	TIF1 alpha (TRIM24 Products)
Background:	RNF82, TIF1, TIF1A, Transcription intermediary factor 1-alpha, TIF1-alpha, E3 ubiquitin-protein

Target Details

	ligase TRIM24, RING finger protein 82, Tripartite motif-containing protein 24
Gene ID:	8805
UniProt:	O15164

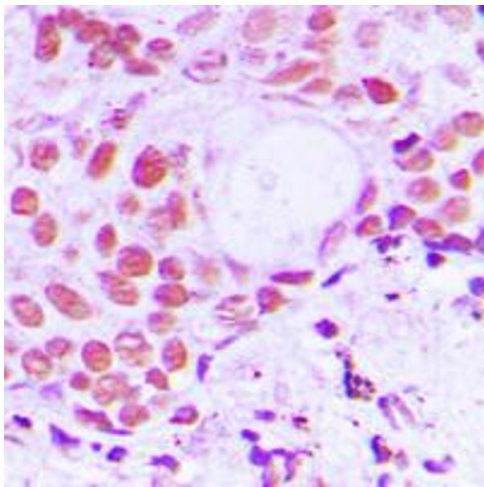
Application Details

Application Notes:	WB (1:500 - 1:1000), IH (1:100 - 1:200)
Restrictions:	For Research Use only

Handling

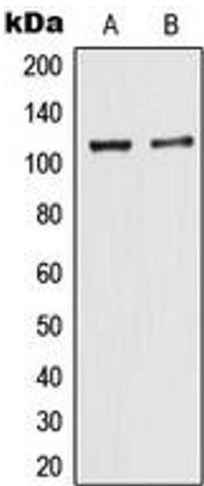
Format:	Liquid
Buffer:	Liquid in 0.42 % Potassium phosphate, 0.87 % Sodium chloride, pH 7.3, 30 % glycerol, and 0.01 % sodium azide.
Preservative:	Sodium azide
Precaution of Use:	This product contains Sodium azide: a POISONOUS AND HAZARDOUS SUBSTANCE which should be handled by trained staff only.
Storage:	-20 °C
Storage Comment:	Shipped at 4°C. Upon delivery aliquot and store at -20°C for one year. Avoid freeze/thaw cycles.
Expiry Date:	12 months

Images



Immunohistochemistry

Image 1. Immunohistochemical analysis of TIF1 alpha staining in human breast cancer formalin fixed paraffin embedded tissue section. The section was pre-treated using heat mediated antigen retrieval with sodium citrate buffer (pH 6.0). The section was then incubated with the antibody at room temperature and detected using an HRP conjugated compact polymer system. DAB was used as the chromogen. The section was then counterstained with haematoxylin and mounted with DPX.



Western Blotting

Image 2. Western blot analysis of TIF1 alpha expression in MCF7 (A), HeLa (B) whole cell lysates.