

Datasheet for ABIN7297466
anti-CES2 antibody (Center)



[Go to Product page](#)

2 Images

Overview

Quantity:	100 µL
Target:	CES2
Binding Specificity:	Center
Reactivity:	Human, Mouse, Rat
Host:	Rabbit
Clonality:	Polyclonal
Conjugate:	This CES2 antibody is un-conjugated
Application:	Western Blotting (WB), Immunohistochemistry (IHC)

Product Details

Immunogen:	KLH-conjugated synthetic peptide encompassing a sequence within the center region of human CES2.
Specificity:	Recognizes endogenous levels of CES2 protein.
Characteristics:	Rabbit polyclonal antibody to CES2
Purification:	The antibody was purified by immunogen affinity chromatography.

Target Details

Target:	CES2
Alternative Name:	CES2 (CES2 Products)
Background:	ICE, Cocaine esterase, Carboxylesterase 2, CE-2, hCE-2, Methylumbelliferyl-acetate deacetylase

Target Details

	2
Gene ID:	8824
UniProt:	O00748

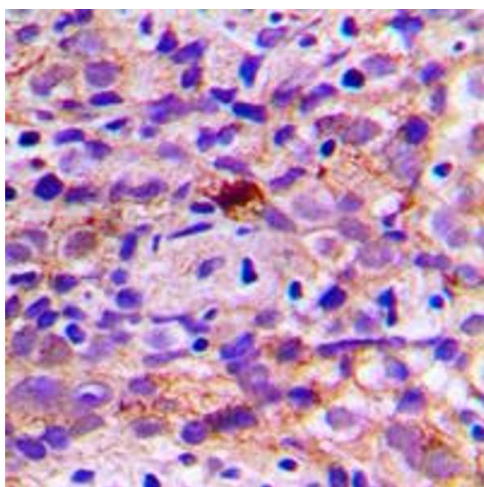
Application Details

Application Notes:	WB (1:500 - 1:1000), IH (1:100 - 1:200)
Restrictions:	For Research Use only

Handling

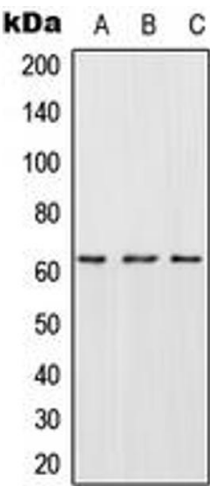
Format:	Liquid
Buffer:	Liquid in 0.42 % Potassium phosphate, 0.87 % Sodium chloride, pH 7.3, 30 % glycerol, and 0.01 % sodium azide.
Preservative:	Sodium azide
Precaution of Use:	This product contains Sodium azide: a POISONOUS AND HAZARDOUS SUBSTANCE which should be handled by trained staff only.
Storage:	-20 °C
Storage Comment:	Shipped at 4°C. Upon delivery aliquot and store at -20°C for one year. Avoid freeze/thaw cycles.
Expiry Date:	12 months

Images



Immunohistochemistry

Image 1. Immunohistochemical analysis of CES2 staining in human breast cancer formalin fixed paraffin embedded tissue section. The section was pre-treated using heat mediated antigen retrieval with sodium citrate buffer (pH 6.0). The section was then incubated with the antibody at room temperature and detected using an HRP conjugated compact polymer system. DAB was used as the chromogen. The section was then counterstained with haematoxylin and mounted with DPX.



Western Blotting

Image 2. Western blot analysis of CES2 expression in HepG2 (A), SP2/0 (B), H9C2 (C) whole cell lysates.