

Datasheet for ABIN7297498  
**anti-KALRN antibody (Center)**[Go to Product page](#)

## 2 Images

## Overview

Quantity:	100 µL
Target:	KALRN
Binding Specificity:	Center
Reactivity:	Human, Mouse, Rat, Monkey
Host:	Rabbit
Clonality:	Polyclonal
Conjugate:	This KALRN antibody is un-conjugated
Application:	Western Blotting (WB), Immunofluorescence (IF), Immunochromatography (IC)

## Product Details

Immunogen:	KLH-conjugated synthetic peptide encompassing a sequence within the center region of human Kalirin.
Specificity:	Recognizes endogenous levels of Kalirin protein.
Characteristics:	Rabbit polyclonal antibody to Kalirin
Purification:	The antibody was purified by immunogen affinity chromatography.

## Target Details

Target:	KALRN
Alternative Name:	Kalirin ( <a href="#">KALRN Products</a> )
Background:	DUET, DUO, HAPIP, TRAD, Kalirin, Huntingtin-associated protein-interacting protein, Protein Duo,

## Target Details

Serine/threonine-protein kinase with Dbl- and pleckstrin homology domain

Gene ID: 8997, 545156, 84009

UniProt: [O60229](#), [A2CG49](#), [P97924](#)

Pathways: [Neurotrophin Signaling Pathway](#)

## Application Details

Application Notes: WB (1:500 - 1:1000), IF/IC (1:100 - 1:500)

Restrictions: For Research Use only

## Handling

Format: Liquid

Buffer: Liquid in 0.42 % Potassium phosphate, 0.87 % Sodium chloride, pH 7.3, 30 % glycerol, and 0.01 % sodium azide.

Preservative: Sodium azide

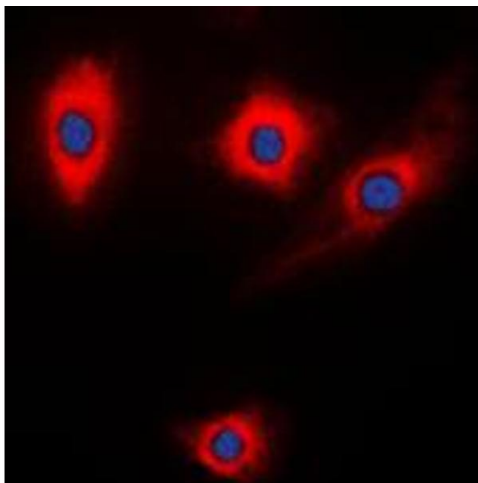
Precaution of Use: This product contains Sodium azide: a POISONOUS AND HAZARDOUS SUBSTANCE which should be handled by trained staff only.

Storage: -20 °C

Storage Comment: Shipped at 4°C. Upon delivery aliquot and store at -20°C for one year. Avoid freeze/thaw cycles.

Expiry Date: 12 months

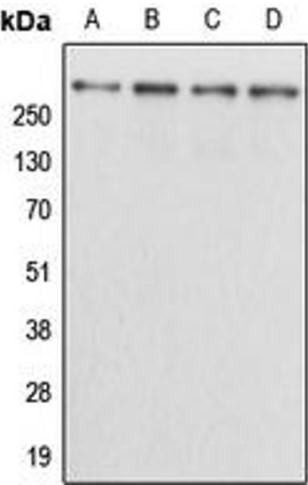
## Images



### Immunofluorescence

**Image 1.** Immunofluorescent analysis of Kalirin staining in NIH3T3 cells. Formalin-fixed cells were permeabilized with 0.1% Triton X-100 in TBS for 5-10 minutes and blocked with 3% BSA-PBS for 30 minutes at room temperature. Cells were probed with the primary antibody in 3% BSA-PBS and incubated overnight at 4 °C in a humidified chamber. Cells were washed with PBST and incubated with a DyLight 594-conjugated secondary antibody (red) in PBS at room

temperature in the dark. DAPI was used to stain the cell nuclei (blue).



Western Blotting

**Image 2.** Western blot analysis of Kalirin expression in HEK293T (A), NIH3T3 (B), H9C2 (C), mouse brain (D) whole cell lysates.