



Datasheet for ABIN7297524
anti-ATP6V0D1 antibody (Center)



[Go to Product page](#)

1 Image

Overview

Quantity:	100 µL
Target:	ATP6V0D1
Binding Specificity:	Center
Reactivity:	Human, Mouse, Rat, Cow
Host:	Rabbit
Clonality:	Polyclonal
Conjugate:	This ATP6V0D1 antibody is un-conjugated
Application:	Western Blotting (WB)

Product Details

Immunogen:	KLH-conjugated synthetic peptide encompassing a sequence within the center region of human ATP6V0D1.
Specificity:	Recognizes endogenous levels of ATP6V0D1 protein.
Characteristics:	Rabbit polyclonal antibody to ATP6V0D1
Purification:	The antibody was purified by immunogen affinity chromatography.

Target Details

Target:	ATP6V0D1
Alternative Name:	ATP6V0D1 (ATP6V0D1 Products)
Background:	ATP6D, VPATPD, V-type proton ATPase subunit d 1, V-ATPase subunit d 1, 32 kDa accessory

Target Details

protein, V-ATPase 40 kDa accessory protein, V-ATPase AC39 subunit, p39, Vacuolar proton pump subunit d 1

Gene ID: 9114, 11972

UniProt: [P61421](#), [P51863](#)

Pathways: [Transition Metal Ion Homeostasis](#), [Proton Transport](#), [ER-Nucleus Signaling](#), [Unfolded Protein Response](#)

Application Details

Application Notes: WB (1:500 - 1:1000)

Restrictions: For Research Use only

Handling

Format: Liquid

Buffer: Liquid in 0.42 % Potassium phosphate, 0.87 % Sodium chloride, pH 7.3, 30 % glycerol, and 0.01 % sodium azide.

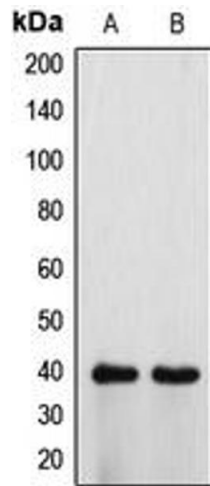
Preservative: Sodium azide

Precaution of Use: This product contains Sodium azide: a POISONOUS AND HAZARDOUS SUBSTANCE which should be handled by trained staff only.

Storage: -20 °C

Storage Comment: Shipped at 4°C. Upon delivery aliquot and store at -20°C for one year. Avoid freeze/thaw cycles.

Expiry Date: 12 months



Western Blotting

Image 1. Western blot analysis of ATP6V0D1 expression in HeLa (A), H9C2 (B) whole cell lysates.