

Datasheet for ABIN7297526
anti-PDLIM1 antibody (Center)



[Go to Product page](#)

4 Images

Overview

Quantity:	100 µL
Target:	PDLIM1
Binding Specificity:	Center
Reactivity:	Human, Mouse, Rat, Pig, Cow, Dog
Host:	Rabbit
Clonality:	Polyclonal
Conjugate:	This PDLIM1 antibody is un-conjugated
Application:	Western Blotting (WB), Immunohistochemistry (IHC), Immunofluorescence (IF), Immunoprecipitation (IP), Immunochromatography (IC)

Product Details

Immunogen:	KLH-conjugated synthetic peptide encompassing a sequence within the center region of human PDLIM1.
Specificity:	Recognizes endogenous levels of PDLIM1 protein.
Characteristics:	Rabbit polyclonal antibody to PDLIM1
Purification:	The antibody was purified by immunogen affinity chromatography.

Target Details

Target:	PDLIM1
Alternative Name:	PDLIM1 (PDLIM1 Products)

Target Details

Background:	CLIM1, CLP36, PDZ and LIM domain protein 1, C-terminal LIM domain protein 1, Elfin, LIM domain protein CLP-36
Gene ID:	9124, 54132, 54133
UniProt:	O00151 , O70400 , P52944

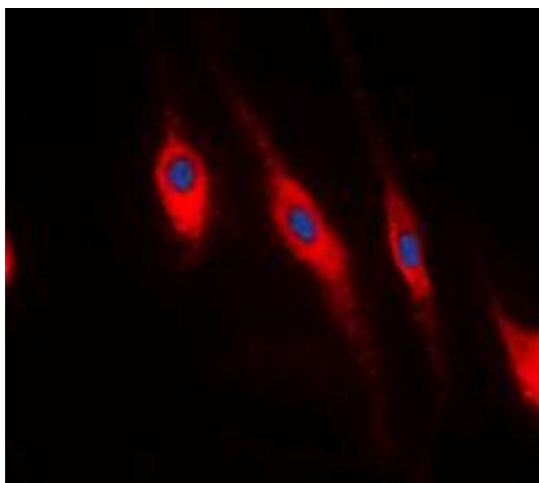
Application Details

Application Notes:	WB (1:500 - 1:1000), IH (1:100 - 1:200), IF/IC (1:100 - 1:500), IP (1:10 - 1:100)
Restrictions:	For Research Use only

Handling

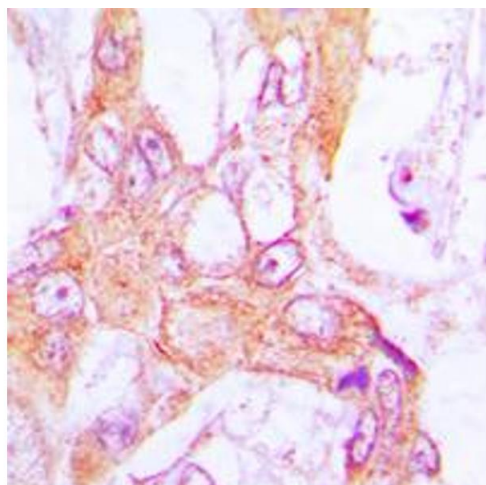
Format:	Liquid
Buffer:	Liquid in 0.42 % Potassium phosphate, 0.87 % Sodium chloride, pH 7.3, 30 % glycerol, and 0.01 % sodium azide.
Preservative:	Sodium azide
Precaution of Use:	This product contains Sodium azide: a POISONOUS AND HAZARDOUS SUBSTANCE which should be handled by trained staff only.
Storage:	-20 °C
Storage Comment:	Shipped at 4°C. Upon delivery aliquot and store at -20°C for one year. Avoid freeze/thaw cycles.
Expiry Date:	12 months

Images



Immunofluorescence

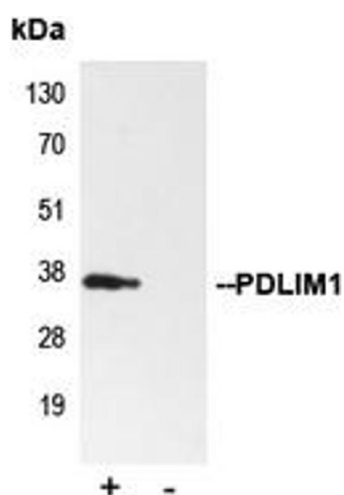
Image 1. Immunofluorescent analysis of PDLIM1 staining in HeLa cells. Formalin-fixed cells were permeabilized with 0.1% Triton X-100 in TBS for 5-10 minutes and blocked with 3% BSA-PBS for 30 minutes at room temperature. Cells were probed with the primary antibody in 3% BSA-PBS and incubated overnight at 4 °C in a humidified chamber. Cells were washed with PBST and incubated with a DyLight 594-conjugated secondary antibody (red) in PBS at room



temperature in the dark. DAPI was used to stain the cell nuclei (blue).

Immunohistochemistry

Image 2. Immunohistochemical analysis of PDLIM1 staining in human lung cancer formalin fixed paraffin embedded tissue section. The section was pre-treated using heat mediated antigen retrieval with sodium citrate buffer (pH 6.0). The section was then incubated with the antibody at room temperature and detected using an HRP conjugated compact polymer system. DAB was used as the chromogen. The section was then counterstained with haematoxylin and mounted with DPX.



Immunoprecipitation

Image 3. Immunoprecipitation of PDLIM1 from 0.5mg HepG2 whole cell extract lysate, using 5ug of Anti-PDLIM1 Antibody and 50ul of protein G magnetic beads (+). No antibody was added to the control (-). The antibody was incubated under agitation with Protein G beads for 10min, HepG2 whole cell extract lysate diluted in RIPA buffer was added to each sample and incubated for a further 10min under agitation. Proteins were eluted by addition of 40ul SDS loading buffer and incubated for 10min at 70°C; 10ul of each sample was separated on a SDS PAGE gel, transferred to a nitrocellulose membrane, blocked with 5% BSA and probed with Anti-PDLIM1 Antibody.

Please check the [product details page](#) for more images. Overall 4 images are available for ABIN7297526.