

Datasheet for ABIN7297542

anti-Exonuclease 1 antibody (N-Term)



[Go to Product page](#)

2 Images

Overview

Quantity:	100 µL
Target:	Exonuclease 1 (EX01)
Binding Specificity:	N-Term
Reactivity:	Human, Mouse
Host:	Rabbit
Clonality:	Polyclonal
Conjugate:	This Exonuclease 1 antibody is un-conjugated
Application:	Western Blotting (WB), Immunofluorescence (IF), Chromatin Immunoprecipitation (ChIP), Immunochromatography (IC)

Product Details

Immunogen:	KLH-conjugated synthetic peptide encompassing a sequence within the N-term region of human EX01.
Specificity:	Recognizes endogenous levels of EX01 protein.
Characteristics:	Rabbit polyclonal antibody to EX01
Purification:	The antibody was purified by immunogen affinity chromatography.

Target Details

Target:	Exonuclease 1 (EX01)
Alternative Name:	EX01 (EX01 Products)

Target Details

Background:	EXO1, HEX1, Exonuclease 1, hExo1, Exonuclease I, hExoI
Gene ID:	9156, 26909
UniProt:	Q9UQ84 , Q9QZ11
Pathways:	DNA Damage Repair , Production of Molecular Mediator of Immune Response

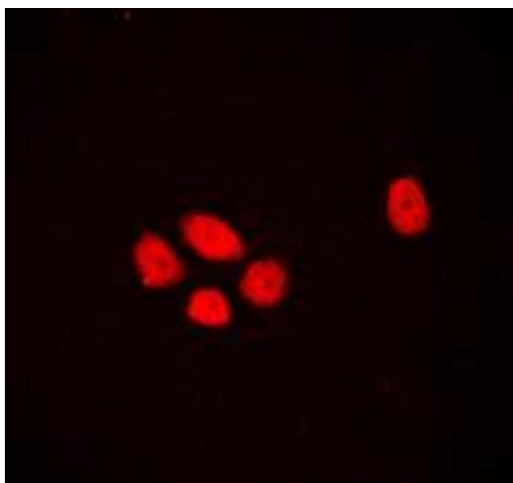
Application Details

Application Notes:	WB (1:500 - 1:1000), IF/IC (1:100 - 1:500), ChIP (1:100 - 1:500)
Restrictions:	For Research Use only

Handling

Format:	Liquid
Buffer:	Liquid in 0.42 % Potassium phosphate, 0.87 % Sodium chloride, pH 7.3, 30 % glycerol, and 0.01 % sodium azide.
Preservative:	Sodium azide
Precaution of Use:	This product contains Sodium azide: a POISONOUS AND HAZARDOUS SUBSTANCE which should be handled by trained staff only.
Storage:	-20 °C
Storage Comment:	Shipped at 4°C. Upon delivery aliquot and store at -20°C for one year. Avoid freeze/thaw cycles.
Expiry Date:	12 months

Images



Immunofluorescence

Image 1. Immunofluorescent analysis of EXO1 staining in A431 cells. Formalin-fixed cells were permeabilized with 0.1% Triton X-100 in TBS for 5-10 minutes and blocked with 3% BSA-PBS for 30 minutes at room temperature. Cells were probed with the primary antibody in 3% BSA-PBS and incubated overnight at 4 °C in a humidified chamber. Cells were washed with PBST and incubated with a DyLight 594-conjugated secondary antibody (red) in PBS at room

temperature in the dark. DAPI was used to stain the cell nuclei (blue).

Western Blotting

Image 2. Western blot analysis of EXO1 expression in Raw264.7 (A), A431 (B) whole cell lysates.

