

Datasheet for ABIN7297554
anti-SLC24A1 antibody (Center)[Go to Product page](#)

2 Images

Overview

Quantity:	100 µL
Target:	SLC24A1
Binding Specificity:	Center
Reactivity:	Human, Mouse, Monkey
Host:	Rabbit
Clonality:	Polyclonal
Conjugate:	This SLC24A1 antibody is un-conjugated
Application:	Western Blotting (WB), Immunofluorescence (IF), Immunochromatography (IC)

Product Details

Immunogen:	KLH-conjugated synthetic peptide encompassing a sequence within the center region of human NCKX1.
Specificity:	Recognizes endogenous levels of NCKX1 protein.
Characteristics:	Rabbit polyclonal antibody to NCKX1
Purification:	The antibody was purified by immunogen affinity chromatography.

Target Details

Target:	SLC24A1
Alternative Name:	NCKX1 (SLC24A1 Products)
Background:	KIAA0702, NCKX1, Sodium/potassium/calcium exchanger 1, Na(+)/K(+)/Ca(2+)-exchange

Target Details

	protein 1, Retinal rod Na-Ca+K exchanger, Solute carrier family 24 member 1
Gene ID:	9187
UniProt:	O60721
Pathways:	Phototransduction

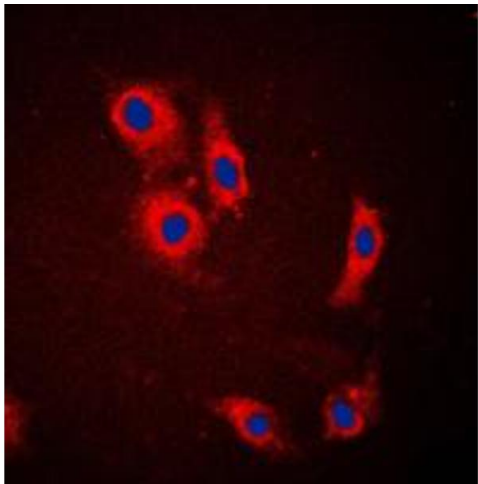
Application Details

Application Notes:	WB (1:500 - 1:1000), IF/IC (1:100 - 1:500)
Restrictions:	For Research Use only

Handling

Format:	Liquid
Buffer:	Liquid in 0.42 % Potassium phosphate, 0.87 % Sodium chloride, pH 7.3, 30 % glycerol, and 0.01 % sodium azide.
Preservative:	Sodium azide
Precaution of Use:	This product contains Sodium azide: a POISONOUS AND HAZARDOUS SUBSTANCE which should be handled by trained staff only.
Storage:	-20 °C
Storage Comment:	Shipped at 4°C. Upon delivery aliquot and store at -20°C for one year. Avoid freeze/thaw cycles.
Expiry Date:	12 months

Images



Immunofluorescence

Image 1. Immunofluorescent analysis of NCKX1 staining in HeLa cells. Formalin-fixed cells were permeabilized with 0.1% Triton X-100 in TBS for 5-10 minutes and blocked with 3% BSA-PBS for 30 minutes at room temperature. Cells were probed with the primary antibody in 3% BSA-PBS and incubated overnight at 4 °C in a humidified chamber. Cells were washed with PBST and incubated with a DyLight 594-conjugated secondary antibody (red) in PBS at room

temperature in the dark. DAPI was used to stain the cell nuclei (blue).

Western Blotting

Image 2. Western blot analysis of NCKX1 expression in HeLa (A), SP2/O (B), NIH3T3 (C) whole cell lysates.

