

Datasheet for ABIN7297582
anti-EFTUD2 antibody (Center)[Go to Product page](#)

2 Images

Overview

| | |
|----------------------|---|
| Quantity: | 100 µL |
| Target: | EFTUD2 |
| Binding Specificity: | Center |
| Reactivity: | Human, Mouse, Rat, Zebrafish (Danio rerio), Cow, Chicken |
| Host: | Rabbit |
| Clonality: | Polyclonal |
| Conjugate: | This EFTUD2 antibody is un-conjugated |
| Application: | Western Blotting (WB), Immunofluorescence (IF), Immunochromatography (IC) |

Product Details

| | |
|------------------|---|
| Immunogen: | KLH-conjugated synthetic peptide encompassing a sequence within the center region of human SNRP116. |
| Specificity: | Recognizes endogenous levels of SNRP116 protein. |
| Characteristics: | Rabbit polyclonal antibody to SNRP116 |
| Purification: | The antibody was purified by immunogen affinity chromatography. |

Target Details

| | |
|-------------------|---|
| Target: | EFTUD2 |
| Alternative Name: | SNRP116 (EFTUD2 Products) |
| Background: | KIAA0031, SNRP116, 116 kDa U5 small nuclear ribonucleoprotein component, Elongation |

Target Details

| | |
|----------|--|
| | factor Tu GTP-binding domain-containing protein 2, SNU114 homolog, hSNU114, U5 snRNP-specific protein, 116 kDa, U5-116 kDa |
| Gene ID: | 9343, 20624 |
| UniProt: | Q15029 , O08810 |

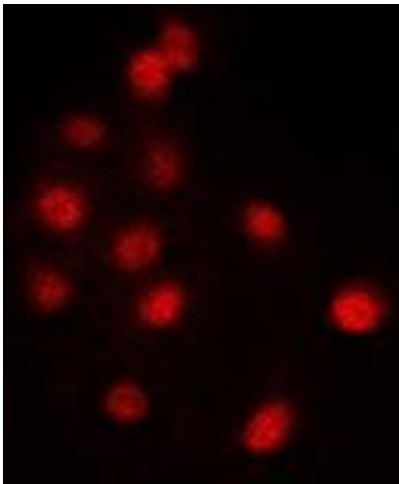
Application Details

| | |
|--------------------|--|
| Application Notes: | WB (1:500 - 1:1000), IF/IC (1:100 - 1:500) |
| Restrictions: | For Research Use only |

Handling

| | |
|--------------------|--|
| Format: | Liquid |
| Buffer: | Liquid in 0.42 % Potassium phosphate, 0.87 % Sodium chloride, pH 7.3, 30 % glycerol, and 0.01 % sodium azide. |
| Preservative: | Sodium azide |
| Precaution of Use: | This product contains Sodium azide: a POISONOUS AND HAZARDOUS SUBSTANCE which should be handled by trained staff only. |
| Storage: | -20 °C |
| Storage Comment: | Shipped at 4°C. Upon delivery aliquot and store at -20°C for one year. Avoid freeze/thaw cycles. |
| Expiry Date: | 12 months |

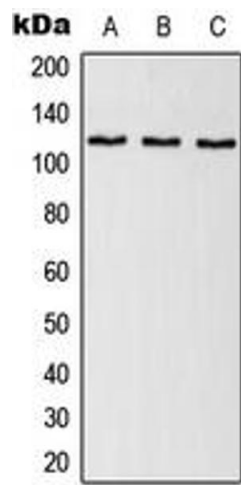
Images



Immunofluorescence

Image 1. Immunofluorescent analysis of SNRP116 staining in NIH3T3 cells. Formalin-fixed cells were permeabilized with 0.1% Triton X-100 in TBS for 5-10 minutes and blocked with 3% BSA-PBS for 30 minutes at room temperature. Cells were probed with the primary antibody in 3% BSA-PBS and incubated overnight at 4 °C in a humidified chamber. Cells were washed with PBST and incubated with a DyLight 594-conjugated secondary antibody (red) in PBS at room

temperature in the dark. DAPI was used to stain the cell nuclei (blue).



Western Blotting

Image 2. Western blot analysis of SNRP116 expression in HeLa (A), NIH3T3 (B), H9C2 (C) whole cell lysates.