

Datasheet for ABIN7297586  
**anti-SLC22A6 antibody (Center)**



[Go to Product page](#)

1 Image

## Overview

Quantity:	100 µL
Target:	SLC22A6
Binding Specificity:	Center
Reactivity:	Human, Monkey
Host:	Rabbit
Clonality:	Polyclonal
Conjugate:	This SLC22A6 antibody is un-conjugated
Application:	Western Blotting (WB)

## Product Details

Immunogen:	KLH-conjugated synthetic peptide encompassing a sequence within the center region of human PAHT.
Specificity:	Recognizes endogenous levels of PAHT protein.
Characteristics:	Rabbit polyclonal antibody to PAHT
Purification:	The antibody was purified by immunogen affinity chromatography.

## Target Details

Target:	SLC22A6
Alternative Name:	PAHT ( <a href="#">SLC22A6 Products</a> )
Background:	Solute carrier family 22 member 6, Organic anion transporter 1, Hoat1, Renal organic anion

## Target Details

	transporter 1, hROAT1, PAH transporter, hPAHT, SLC22A6, OAT1, PAHT
Gene ID:	9356
UniProt:	<a href="#">O95742</a>
Pathways:	<a href="#">Dicarboxylic Acid Transport</a>

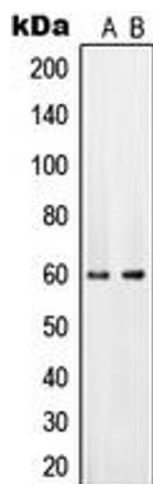
## Application Details

Application Notes:	WB (1:500 - 1:1000)
Restrictions:	For Research Use only

## Handling

Format:	Liquid
Buffer:	Liquid in 0.42 % Potassium phosphate, 0.87 % Sodium chloride, pH 7.3, 30 % glycerol, and 0.01 % sodium azide.
Preservative:	Sodium azide
Precaution of Use:	This product contains Sodium azide: a POISONOUS AND HAZARDOUS SUBSTANCE which should be handled by trained staff only.
Storage:	-20 °C
Storage Comment:	Shipped at 4°C. Upon delivery aliquot and store at -20°C for one year. Avoid freeze/thaw cycles.
Expiry Date:	12 months

## Images



### Western Blotting

**Image 1.** Western blot analysis of PAHT expression in HeLa (A), mouse brain (B) whole cell lysates.