

Datasheet for ABIN7297648
anti-CEP57 antibody (Center)[Go to Product page](#)

2 Images

Overview

Quantity:	100 µL
Target:	CEP57
Binding Specificity:	Center
Reactivity:	Human, Monkey
Host:	Rabbit
Clonality:	Polyclonal
Conjugate:	This CEP57 antibody is un-conjugated
Application:	Western Blotting (WB), Immunohistochemistry (IHC)

Product Details

Immunogen:	KLH-conjugated synthetic peptide encompassing a sequence within the center region of human CEP57.
Specificity:	Recognizes endogenous levels of CEP57 protein.
Characteristics:	Rabbit polyclonal antibody to CEP57
Purification:	The antibody was purified by immunogen affinity chromatography.

Target Details

Target:	CEP57
Alternative Name:	CEP57 (CEP57 Products)
Background:	KIAA0092, TSP57, Centrosomal protein of 57 kDa, Cep57, FGF2-interacting protein, Testis-

Target Details

	specific protein 57, Translokin
Gene ID:	9702
UniProt:	Q86XR8
Pathways:	M Phase , Maintenance of Protein Location , Protein targeting to Nucleus , Growth Factor Binding

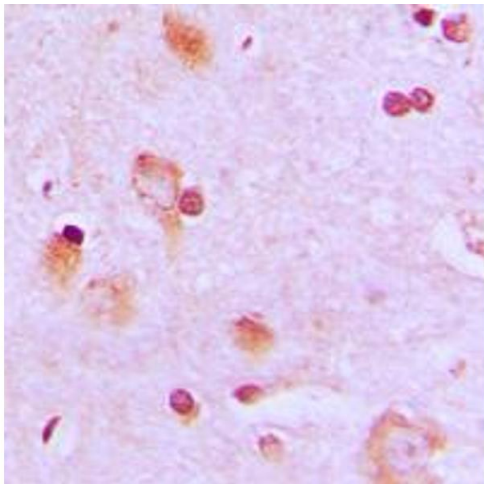
Application Details

Application Notes:	WB (1:500 - 1:1000), IH (1:100 - 1:200)
Restrictions:	For Research Use only

Handling

Format:	Liquid
Buffer:	Liquid in 0.42 % Potassium phosphate, 0.87 % Sodium chloride, pH 7.3, 30 % glycerol, and 0.01 % sodium azide.
Preservative:	Sodium azide
Precaution of Use:	This product contains Sodium azide: a POISONOUS AND HAZARDOUS SUBSTANCE which should be handled by trained staff only.
Storage:	-20 °C
Storage Comment:	Shipped at 4°C. Upon delivery aliquot and store at -20°C for one year. Avoid freeze/thaw cycles.
Expiry Date:	12 months

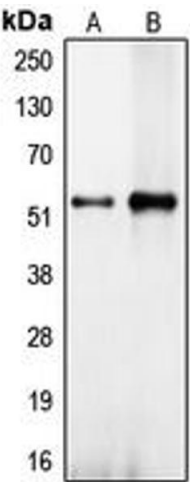
Images



Immunohistochemistry

Image 1. Immunohistochemical analysis of CEP57 staining in human brain formalin fixed paraffin embedded tissue section. The section was pre-treated using heat mediated antigen retrieval with sodium citrate buffer (pH 6.0). The section was then incubated with the antibody at room temperature and detected using an HRP conjugated compact polymer system. DAB was used as the chromogen. The section was then counterstained with

haematoxylin and mounted with DPX.



Western Blotting

Image 2. Western blot analysis of CEP57 expression in NT2D1 (A), HeLa (B) whole cell lysates.