

Datasheet for ABIN7297674
anti-PSMD6 antibody (Center)[Go to Product page](#)

2 Images

Overview

| | |
|----------------------|---|
| Quantity: | 100 µL |
| Target: | PSMD6 |
| Binding Specificity: | Center |
| Reactivity: | Human, Mouse, Rat, Cow, Monkey |
| Host: | Rabbit |
| Clonality: | Polyclonal |
| Conjugate: | This PSMD6 antibody is un-conjugated |
| Application: | Western Blotting (WB), Immunohistochemistry (IHC) |

Product Details

| | |
|------------------|---|
| Immunogen: | KLH-conjugated synthetic peptide encompassing a sequence within the center region of human PSMD6. |
| Specificity: | Recognizes endogenous levels of PSMD6 protein. |
| Characteristics: | Rabbit polyclonal antibody to PSMD6 |
| Purification: | The antibody was purified by immunogen affinity chromatography. |

Target Details

| | |
|-------------------|--|
| Target: | PSMD6 |
| Alternative Name: | PSMD6 (PSMD6 Products) |
| Background: | KIAA0107, PFAAP4, 26S proteasome non-ATPase regulatory subunit 6, 26S proteasome |

Target Details

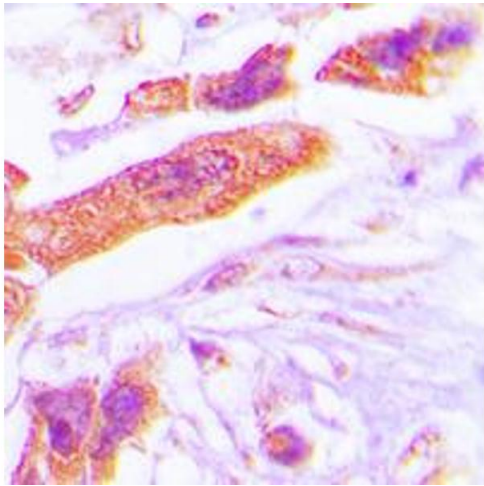
| | |
|-----------|--|
| | regulatory subunit RPN7, 26S proteasome regulatory subunit S10, Breast cancer-associated protein SGA-113M, Phosphonoformate immuno-associated protein 4, Proteasome regulatory particle subunit p44S10, p42A |
| Gene ID: | 9861, 66413 |
| UniProt: | Q15008 , Q99J14 |
| Pathways: | Mitotic G1-G1/S Phases , DNA Replication , Synthesis of DNA , Ubiquitin Proteasome Pathway |

Application Details

| | |
|--------------------|---|
| Application Notes: | WB (1:500 - 1:1000), IH (1:100 - 1:200) |
| Restrictions: | For Research Use only |

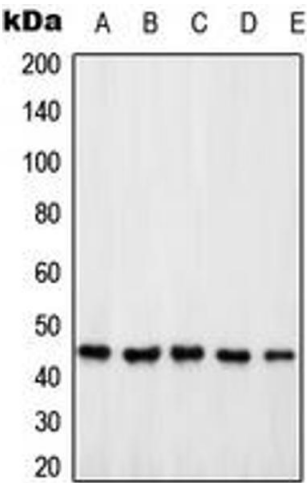
Handling

| | |
|--------------------|--|
| Format: | Liquid |
| Buffer: | Liquid in 0.42 % Potassium phosphate, 0.87 % Sodium chloride, pH 7.3, 30 % glycerol, and 0.01 % sodium azide. |
| Preservative: | Sodium azide |
| Precaution of Use: | This product contains Sodium azide: a POISONOUS AND HAZARDOUS SUBSTANCE which should be handled by trained staff only. |
| Storage: | -20 °C |
| Storage Comment: | Shipped at 4°C. Upon delivery aliquot and store at -20°C for one year. Avoid freeze/thaw cycles. |
| Expiry Date: | 12 months |



Immunohistochemistry

Image 1. Immunohistochemical analysis of PSMD6 staining in human lung cancer formalin fixed paraffin embedded tissue section. The section was pre-treated using heat mediated antigen retrieval with sodium citrate buffer (pH 6.0). The section was then incubated with the antibody at room temperature and detected using an HRP conjugated compact polymer system. DAB was used as the chromogen. The section was then counterstained with haematoxylin and mounted with DPX.



Western Blotting

Image 2. Western blot analysis of PSMD6 expression in HeLa (A), Jurkat (B), HEK293T (C), SP2/0 (D), PC12 (E) whole cell lysates.