

Datasheet for ABIN7297688
anti-UBAP2L antibody (Center)[Go to Product page](#)

2 Images

Overview

Quantity:	100 µL
Target:	UBAP2L
Binding Specificity:	Center
Reactivity:	Human, Mouse, Rat
Host:	Rabbit
Clonality:	Polyclonal
Conjugate:	This UBAP2L antibody is un-conjugated
Application:	Western Blotting (WB), Immunofluorescence (IF), Immunochromatography (IC)

Product Details

Immunogen:	KLH-conjugated synthetic peptide encompassing a sequence within the center region of human NICE4.
Specificity:	Recognizes endogenous levels of NICE4 protein.
Characteristics:	Rabbit polyclonal antibody to NICE4
Purification:	The antibody was purified by immunogen affinity chromatography.

Target Details

Target:	UBAP2L
Alternative Name:	NICE4 (UBAP2L Products)
Background:	KIAA0144, NICE4, Ubiquitin-associated protein 2-like, Protein NICE-4

Target Details

Gene ID:	9898, 74383
UniProt:	Q14157 , Q80X50
Pathways:	SARS-CoV-2 Protein Interactome , The Global Phosphorylation Landscape of SARS-CoV-2 Infection

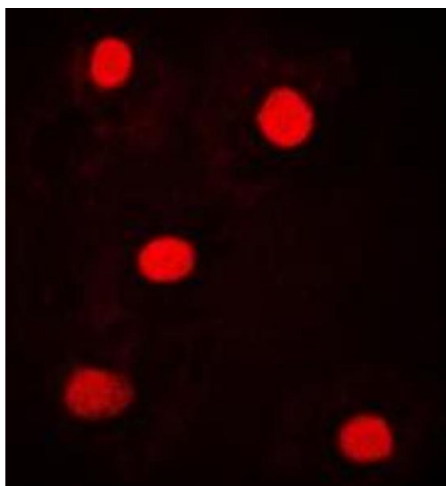
Application Details

Application Notes:	WB (1:500 - 1:1000), IF/IC (1:100 - 1:500)
Restrictions:	For Research Use only

Handling

Format:	Liquid
Buffer:	Liquid in 0.42 % Potassium phosphate, 0.87 % Sodium chloride, pH 7.3, 30 % glycerol, and 0.01 % sodium azide.
Preservative:	Sodium azide
Precaution of Use:	This product contains Sodium azide: a POISONOUS AND HAZARDOUS SUBSTANCE which should be handled by trained staff only.
Storage:	-20 °C
Storage Comment:	Shipped at 4°C. Upon delivery aliquot and store at -20°C for one year. Avoid freeze/thaw cycles.
Expiry Date:	12 months

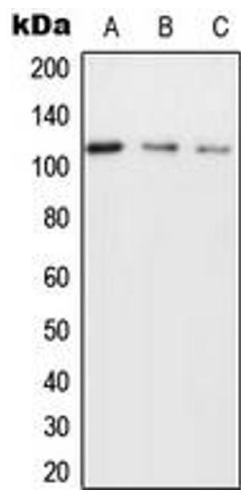
Images



Immunofluorescence

Image 1. Immunofluorescent analysis of NICE4 staining in MCF7 cells. Formalin-fixed cells were permeabilized with 0.1% Triton X-100 in TBS for 5-10 minutes and blocked with 3% BSA-PBS for 30 minutes at room temperature. Cells were probed with the primary antibody in 3% BSA-PBS and incubated overnight at 4 °C in a humidified chamber. Cells were washed with PBST and incubated with a DyLight 594-conjugated secondary antibody (red) in PBS at room

temperature in the dark. DAPI was used to stain the cell nuclei (blue).



Western Blotting

Image 2. Western blot analysis of NICE4 expression in MCF7 (A), SP2/O (B), H9C2 (C) whole cell lysates.