

Datasheet for ABIN7297710  
**anti-BIM antibody (N-Term)**



[Go to Product page](#)

2 Images

## Overview

Quantity:	100 µL
Target:	BIM (BCL2L11)
Binding Specificity:	N-Term
Reactivity:	Human, Mouse, Rat, Cow, Dog, Pig, Rabbit
Host:	Rabbit
Clonality:	Polyclonal
Conjugate:	This BIM antibody is un-conjugated
Application:	Western Blotting (WB), Immunohistochemistry (IHC)

## Product Details

Immunogen:	KLH-conjugated synthetic peptide encompassing a sequence within the N-term region of human BIM.
Specificity:	Recognizes endogenous levels of BIM protein.
Characteristics:	Rabbit polyclonal antibody to BIM
Purification:	The antibody was purified by immunogen affinity chromatography.

## Target Details

Target:	BIM (BCL2L11)
Alternative Name:	BIM ( <a href="#">BCL2L11 Products</a> )
Background:	BIM, Bcl-2-like protein 11, Bcl2-L-11, Bcl2-interacting mediator of cell death

## Target Details

Gene ID:	10018, 12125, 64547
UniProt:	<a href="#">O43521</a> , <a href="#">O54918</a> , <a href="#">O88498</a>
Pathways:	<a href="#">PI3K-Akt Signaling</a> , <a href="#">Neurotrophin Signaling Pathway</a> , <a href="#">Tube Formation</a> , <a href="#">Positive Regulation of Endopeptidase Activity</a>

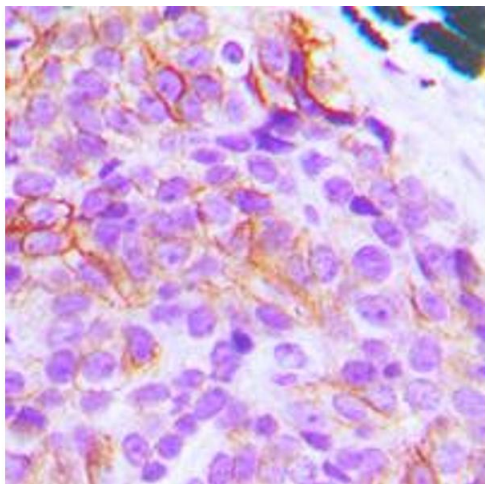
## Application Details

Application Notes:	WB (1:500 - 1:1000), IH (1:100 - 1:200)
Restrictions:	For Research Use only

## Handling

Format:	Liquid
Buffer:	Liquid in 0.42 % Potassium phosphate, 0.87 % Sodium chloride, pH 7.3, 30 % glycerol, and 0.01 % sodium azide.
Preservative:	Sodium azide
Precaution of Use:	This product contains Sodium azide: a POISONOUS AND HAZARDOUS SUBSTANCE which should be handled by trained staff only.
Storage:	-20 °C
Storage Comment:	Shipped at 4°C. Upon delivery aliquot and store at -20°C for one year. Avoid freeze/thaw cycles.
Expiry Date:	12 months

## Images



### Immunohistochemistry

**Image 1.** Immunohistochemical analysis of BIM staining in human breast cancer formalin fixed paraffin embedded tissue section. The section was pre-treated using heat mediated antigen retrieval with sodium citrate buffer (pH 6.0). The section was then incubated with the antibody at room temperature and detected using an HRP conjugated compact polymer system. DAB was used as the chromogen. The section was then counterstained with

haematoxylin and mounted with DPX.

Western Blotting

**Image 2.** Western blot analysis of BIM expression in HeLa (A), K562 (B), Raji (C), HEK293T (D), MCF7 (E), mouse kidney (F), rat kidney (G) whole cell lysates.

