

Datasheet for ABIN7297718  
**anti-ABCF2 antibody (Center)**



[Go to Product page](#)

1 Image

## Overview

Quantity:	100 µL
Target:	ABCF2
Binding Specificity:	Center
Reactivity:	Human, Rat, Mouse, Cow, Pig
Host:	Rabbit
Clonality:	Polyclonal
Conjugate:	This ABCF2 antibody is un-conjugated
Application:	Western Blotting (WB)

## Product Details

Immunogen:	KLH-conjugated synthetic peptide encompassing a sequence within the center region of human ABCF2.
Specificity:	Recognizes endogenous levels of ABCF2 protein.
Characteristics:	Rabbit polyclonal antibody to ABCF2
Purification:	The antibody was purified by immunogen affinity chromatography.

## Target Details

Target:	ABCF2
Alternative Name:	ABCF2 ( <a href="#">ABCF2 Products</a> )
Background:	ATP-binding cassette sub-family F member 2, Iron-inhibited ABC transporter 2

Target Details

Gene ID:	10061, 27407
UniProt:	<a href="#">Q9UG63</a> , <a href="#">Q99LE6</a>

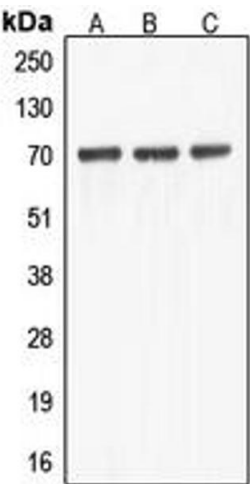
Application Details

Application Notes:	WB (1:500 - 1:1000)
Restrictions:	For Research Use only

Handling

Format:	Liquid
Buffer:	Liquid in 0.42 % Potassium phosphate, 0.87 % Sodium chloride, pH 7.3, 30 % glycerol, and 0.01 % sodium azide.
Preservative:	Sodium azide
Precaution of Use:	This product contains Sodium azide: a POISONOUS AND HAZARDOUS SUBSTANCE which should be handled by trained staff only.
Storage:	-20 °C
Storage Comment:	Shipped at 4°C. Upon delivery aliquot and store at -20°C for one year. Avoid freeze/thaw cycles.
Expiry Date:	12 months

Images



Western Blotting

**Image 1.** Western blot analysis of ABCF2 expression in HEK293T (A), HeLa (B), NIH3T3 (C) whole cell lysates.