



[Go to Product page](#)

Datasheet for ABIN7297724
anti-PPIF antibody (Center)

2 Images

Overview

Quantity:	100 µL
Target:	PPIF
Binding Specificity:	Center
Reactivity:	Human, Rat, Mouse, Rabbit
Host:	Rabbit
Clonality:	Polyclonal
Conjugate:	This PPIF antibody is un-conjugated
Application:	Western Blotting (WB), Immunofluorescence (IF), Immunoprecipitation (IP), Immunochromatography (IC)

Product Details

Immunogen:	KLH-conjugated synthetic peptide encompassing a sequence within the center region of human Cyclophilin F.
Specificity:	Recognizes endogenous levels of Cyclophilin F protein.
Characteristics:	Rabbit polyclonal antibody to Cyclophilin F
Purification:	The antibody was purified by immunogen affinity chromatography.

Target Details

Target:	PPIF
Alternative Name:	Cyclophilin F (PPIF Products)

Target Details

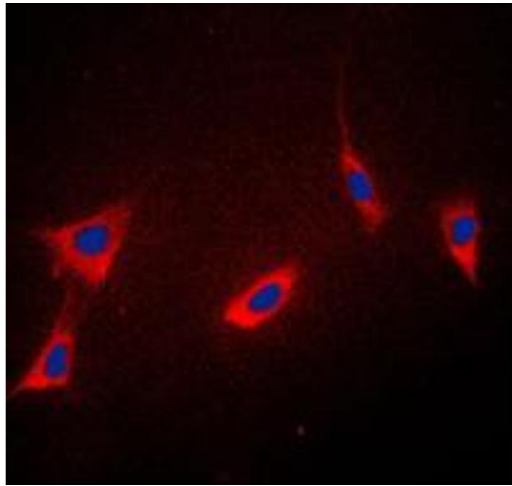
Background:	CYP3, Peptidyl-prolyl cis-trans isomerase F, mitochondrial, PPlase F, Cyclophilin D, CyP-D, CypD, Cyclophilin F, Mitochondrial cyclophilin, CyP-M, Rotamase F
Gene ID:	10105, 105675, 282819
UniProt:	P30405 , Q99KR7 , P29117
Pathways:	Proton Transport , Negative Regulation of intrinsic apoptotic Signaling , Negative Regulation of Transporter Activity

Application Details

Application Notes:	WB (1:500 - 1:1000), IF/IC (1:100 - 1:500), IP (1:10 - 1:100)
Restrictions:	For Research Use only

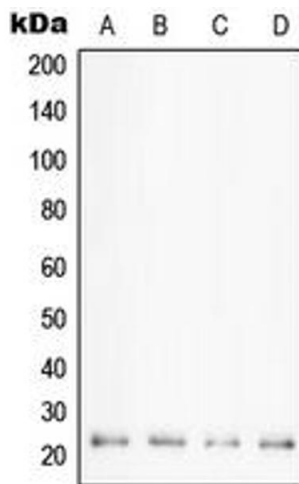
Handling

Format:	Liquid
Buffer:	Liquid in 0.42 % Potassium phosphate, 0.87 % Sodium chloride, pH 7.3, 30 % glycerol, and 0.01 % sodium azide.
Preservative:	Sodium azide
Precaution of Use:	This product contains Sodium azide: a POISONOUS AND HAZARDOUS SUBSTANCE which should be handled by trained staff only.
Storage:	-20 °C
Storage Comment:	Shipped at 4°C. Upon delivery aliquot and store at -20°C for one year. Avoid freeze/thaw cycles.
Expiry Date:	12 months



Immunofluorescence

Image 1. Immunofluorescent analysis of Cyclophilin F staining in K562 cells. Formalin-fixed cells were permeabilized with 0.1% Triton X-100 in TBS for 5-10 minutes and blocked with 3% BSA-PBS for 30 minutes at room temperature. Cells were probed with the primary antibody in 3% BSA-PBS and incubated overnight at 4 °C in a humidified chamber. Cells were washed with PBST and incubated with a DyLight 594-conjugated secondary antibody (red) in PBS at room temperature in the dark. DAPI was used to stain the cell nuclei (blue).



Western Blotting

Image 2. Western blot analysis of Cyclophilin F expression in HeLa (A), K562 (B), HL60 (C), Jurkat (D) whole cell lysates.